



# LAMPTON PARKSIDE

WEST LONDON TW3

## FOREST VIEW

A collection of 1, 2 and 3  
bedroom apartments and  
2 and 3 bedroom duplexes



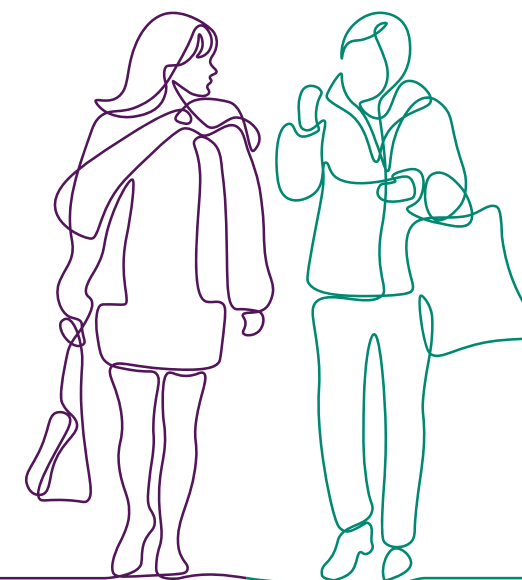
LAMPTON  
PARKSIDE

WEST LONDON TW3

## INTRODUCING FOREST VIEW

A COLLECTION OF STYLISH, MODERN HOMES  
COMPRISING 1, 2 AND 3 BEDROOM APARTMENTS,  
AND 2 AND 3 BEDROOM DUPLEXES, ALL WITH  
THEIR OWN PRIVATE OUTDOOR SPACE.

Ideally located at Lampton Parkside, these homes combine  
a beautiful green setting next to 40 acres of parkland,  
with all the amenities, opportunities and connections of  
London living. It is a place where you can savour the city,  
delight in nature and live life with more vitality.





# AN UPLIFTING PARKSIDE LOCATION

ENJOY LIVING IN A FLOURISHING COMMUNITY, WHERE YOU CAN  
EMBRACE A HAPPY, HEALTHY AND REFRESHING LIFESTYLE.

Forest View is the final collection of homes to benefit from a prime position next to Lampton Parkside, with some apartments enjoying leafy parkland views. Designed around an elevated central garden, with car parking located underneath, these homes offer plenty of opportunities to connect with the outside. All have balconies or terraces, while some duplexes have their own garden too. There is also a residents' terrace, the perfect place to relax as the sun sets over London.

Ample cycle storage is provided on the ground floor of Forest View, so that you can travel by bicycle easily and conveniently.

A concierge service, conveniently located on the ground floor of the neighbouring block, provides a 12 hour a day, 7 day a week service and is available to all apartments. From receiving deliveries whilst you are out to being a central hub for information, this personal service is here to make life at Lampton Parkside even easier.

Attractive gardens, landscaping and leafy streets create a welcoming environment, where residents can pause, meet and form friendships. Lampton Park features 40 acres of green space, with sports fields, tennis courts, bowling green, playground, wooded areas and historic rose garden. And Hounslow's tube station just a four-minute walk and town centre less than half a mile away, you have everything you need on your doorstep.





# APARTMENTS AND DUPLEXES SPECIFICATION

HOMES ARE LIGHT, COMFORTABLE AND BEAUTIFULLY  
FINISHED, WITH FLEXIBLE SPACES WHERE YOU CAN WORK,  
RELAX, SOCIALISE AND ENTERTAIN.



Image of Forest View show apartment G1.52 is indicative only

## KITCHEN

- Matt finish handleless units with soft close to doors and drawers
- Caesarstone worktop with matching upstands and splashback behind hob
- Induction hob
- Integrated single oven
- Integrated microwave
- Integrated dishwasher
- Integrated fridge/freezer
- Integrated cooker hood
- Stainless steel undermounted sink with contemporary brushed steel mixer tap
- LED feature lighting to wall units
- Washer/dryer (freestanding in hallway cupboard)

Kitchen designs and layouts vary; please speak to our Sales Executives for further information

## EN-SUITE

- Low profile shower tray with glass shower door
- Feature mirror with shelf to match vanity top (where layout allows)
- Heated chrome towel rail

## BATHROOM

- Bath with shower over and glass screen
- Bath panel to match vanity top
- Feature mirror with shelf (where layout allows)
- Heated chrome towel rail

## DECORATIVE FINISHES

- Painted solid core or composite front entrance door with multi-point locking system
- High efficiency double glazed aluminium timber composite windows
- Timber staircase with carpeted treads and risers to duplexes
- White painted flush internal doors with contemporary dual finish ironmongery

- Built in mirrored wardrobe with sliding doors to principal bedroom
- Square cut skirting and architrave
- Walls painted in white emulsion
- Smooth ceilings in white emulsion

## FLOOR FINISHES

- Amtico flooring to entrance hall, kitchen/dining/living room, separate lower floor living room, bathroom, en-suite and WC
- Carpet to bedrooms, family room, separate upper floor living room, study, stairs and landing to duplexes

## HEATING AND WATER

- Underfloor heating throughout each apartment
- Heating via communal heating plant

## ELECTRICAL

- Downlights to entrance hall, kitchen/dining/living room, kitchen/dining room, bathroom, en-suite and WC
- Pendant fittings to family room and all bedrooms
- LED feature lighting to wall units in kitchen
- Shaver sockets to bathroom and en-suite
- TV, BT and data points to selected locations
- Wiring for customer's own broadband connection
- Pre-wired for customer's own Sky Q connection
- Video entry system to every apartment accessed from communal core, linked to main entrance door
- External lighting to balcony/terrace
- Hard-wired smoke and heat detectors
- Sprinkler system to all apartments
- Spur for customer's own installation of security alarm panel

## EXTERNAL FINISHES

- Porcelain tiles to balconies
- Private tiled terrace to selected first floor apartments and duplexes as indicated on plans

## COMMUNAL AREAS

- Fob controlled access system to entrance lobby where apartments accessed off communal core
- Lift access to all floors where accessed off main communal core
- Cycle and bin storage space
- Letterboxes provided within communal entrance lobby

## PARKING

- Right to Park car parking spaces available for purchase – please speak to our Sales Executives
- Electric car charging points available to selected parking spaces

## CONSTRUCTION

- Steel reinforced concrete frame with outer brickwork, cavity filled with insulation
- Concrete floors
- Exterior treatments are a combination of buff, red and dark red facing bricks with biodiverse roofs

## GENERAL

- 10 year NHBC warranty
- 999 year lease
- A service charge will be payable for the maintenance of the shared facilities and communal areas

The apartment buildings, landscaped area and the shared facilities at Lampton Parkside will be managed and maintained by Notting Hill Genesis. All residents will be required to pay annual service charge contributions for the management, repair and maintenance of these areas, which will be collected by Notting Hill Genesis. We are unable to accommodate any individual changes, additions or amendments to the specification, layout or plans to any individual home. Please note that it may not be possible to obtain the products as referred to in the specification; in such cases a similar alternative will be provided. Hill reserve the right to make these changes as required.



# SITE PLAN



The information contained within this document does not constitute part of any offer, contract or warranty. Whilst the plans have been prepared with all due care for the convenience of the intending purchaser, the information contained herein is a preliminary guide only. Areas such as roads, drives, paths and patios plus trees and landscaping are indicative only and may vary. Affordable housing is indicative and can be moved.

## RESIDENTS' PARKING (GROUND)

Secure parking for Forest View residents is located underneath the central garden, accessible via 3 stairwells and 5 lifts. With 5 cycle stores and 53 parking spaces\*, 45 benefitting from electric charging points, eco-friendly transport is well catered for.



## RESIDENTS' GARDEN (FLOOR 1)

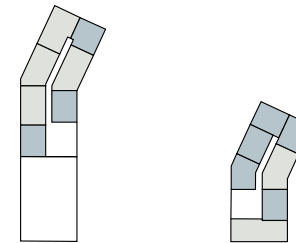
The elevated central garden is a place of tranquility, exclusively for the use of the residents at Forest View. As you enter you are greeted by a variety of trees, planted borders and the central lawn, a moment of calm through which you pass before heading to your home.



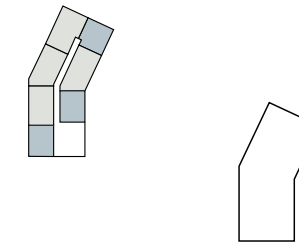
# FOREST VIEW

## APARTMENTS & DUPLEXES

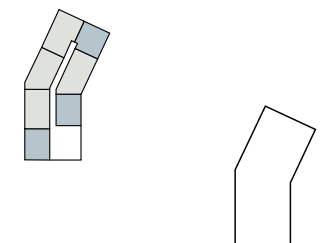
Floor 6



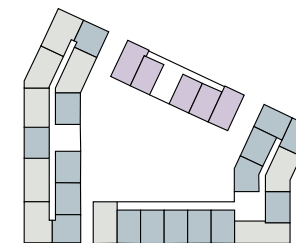
Floor 7



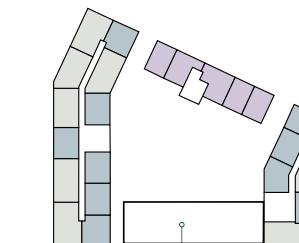
Floor 8



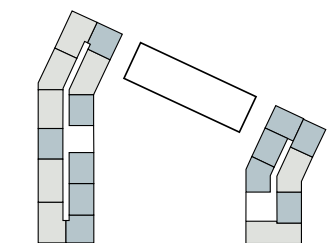
Floor 3



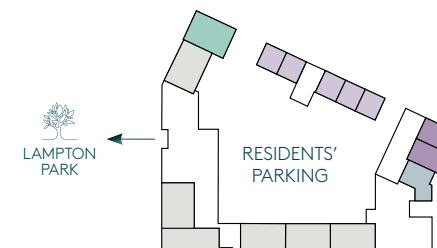
Floor 4



Floor 5



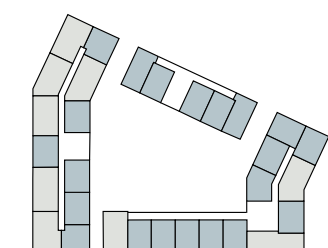
Ground



Floor 1



Floor 2



- 1 bedroom apartment
- 2 bedroom apartment
- 3 bedroom apartment
- 2 bedroom duplex
- 3 bedroom duplex
- Active charging points







# FOREST VIEW

## GROUND WEST



### F1.2 - 2 bedroom apartment

Kitchen/Dining/Living	7.95m x 5.20m	26'0" x 17'0"
Principal Bedroom	5.35m x 3.00m	17'6" x 9'10"
Bedroom 2	4.05m x 3.10m	13'3" x 10'2"
Terrace	11.75m x 1.75m	38'6" x 5'8"

### F1.3 - 2 bedroom apartment

Kitchen/Dining/Living	7.95m x 5.20m	26'0" x 17'0"
Principal Bedroom	5.25m x 3.00m	17'6" x 9'10"
Bedroom 2	3.95m x 3.10m	12'11" x 10'2"
Terrace	1.80m x 11.80m	5'10" x 38'8"

### F1.4 - 2 bedroom apartment

Kitchen/Dining/Living	6.95m x 5.05m	22'7" x 16'6"
Principal Bedroom	3.30m x 4.20m	10'9" x 13'9"
Bedroom 2	2.90m x 3.90m	9'6" x 12'9"
Terrace	16.60m x 7.10m	54'5" x 23'3"

### F3.6 - 2 bedroom apartment

Kitchen/Dining/Living	4.00m x 5.75m	13'1" x 18'10"
Principal Bedroom	2.75m x 4.00m	9'0" x 13'1"
Bedroom 2	2.80m x 4.10m	9'2" x 13'5"
Terrace	11.60m x 1.30m	38'0" x 4'1"

### F1.1 - 3 bedroom apartment

Kitchen/Dining/Living	4.30m x 7.95m	14'1" x 26'0"
Principal Bedroom	2.85m x 4.75m	9'4" x 15'7"
Bedroom 2	4.00m x 2.90m	13'1" x 9'6"
Bedroom 3	2.50m x 3.25m	8'2" x 10'7"
Terrace	12.90m x 10.10m	42'3" x 33'1"

### F2.1 - 2 bedroom duplex (lower)

See page 52 for details

### F2.2 - 2 bedroom duplex (lower)

See page 44 for details

2 bedroom apartment 2 bedroom duplex 3 bedroom apartment Active charging points

C = Cupboard W = Wardrobe R = Riser Cupboard US = Utility Store [WD] = Washer/Dryer [MVHR] = MVHR  
[HIU] = Heat Interface Unit [ ] = Indicative Wardrobe Position

All floorplans are not to scale. Layouts provide approximate measurements only and are subject to planning. Dimensions, which are taken from the indicated points of measurement, are for guidance only and are not intended to be used for window treatments or items of furniture. Bathroom and kitchen layouts are indicative only and are subject to change. Wardrobe size and position may vary. The total square footage given is an estimate only. In the event of your making an offer you should refer to the contract documentation for information and contractual provisions relating to net sales area. The information contained within this document does not constitute part of any offer, contract, or warranty. Whilst the plans have been prepared with all due care for the convenience of the intending purchaser, the information contained herein is a preliminary guide only.





F1.14

Duplex F2.1

Duplex F2.2

See page 52  
for details

See page 44  
for details

# FOREST VIEW

## FLOOR 1 WEST

### F1.5 - 1 bedroom apartment

Kitchen/Dining/Living	6.10m x 4.55m	20'0" x 14'11"
Bedroom	3.45m x 3.85m	11'3" x 12'7"
Terrace	3.05m x 8.25m	10'0" x 27'0"

### F1.6 - 1 bedroom apartment

Kitchen/Dining/Living	6.15m x 4.50m	20'2" x 14'9"
Bedroom	3.85m x 3.55m	12'7" x 11'7"
Terrace	2.90m x 8.35m	9'6" x 27'4"

### F1.7 - 1 bedroom apartment

Kitchen/Dining/Living	3.50m x 7.35m	11'5" x 24'1"
Bedroom	3.40m x 2.90m	11'1" x 9'6"
Terrace	2.90m x 7.30m	9'6" x 23'11"
Balcony	3.50m x 1.65m	11'5" x 5'4"

### F1.10 - 1 bedroom apartment

Kitchen/Dining/Living	6.25m x 4.65m	20'6" x 15'3"
Bedroom	3.85m x 3.25m	12'7" x 10'7"
Balcony	1.65m x 3.50m x	5'4" x 11'5"

### F1.14 - 1 bedroom apartment

Kitchen/Dining/Living	3.60m x 7.35m	11'9" x 24'1"
Bedroom	3.40m x 2.90m	11'1" x 9'6"
Terrace	3.60m x 8.60	11'9" x 28'2"
Balcony	3.50m x 1.65m	11'5" x 5'4"

### F1.16 - 1 bedroom apartment

Kitchen/Dining/Living	6.15m x 4.70m	20'2" x 15'5"
Bedroom	3.95m x 3.25m	12'11" x 10'7"
Terrace	3.05 x 8.10m	10'0" x 26'6"

### F3.14 - 1 bedroom apartment

Kitchen/Dining/Living	3.15m x 8.45m	10'4" x 27'8"
Bedroom	2.75m x 5.00m	9'0" x 16'4"
Balcony	3.50m x 1.65m	11'5" x 5'4"

### F3.15 - 1 bedroom apartment

Kitchen/Dining/Living	3.15m x 8.45m	10'4" x 27'8"
Bedroom	2.75m x 5.00m	9'0" x 16'4"
Balcony	3.50m x 1.65m	11'5" x 5'4"

### F1.8 - 2 bedroom apartment

Kitchen/Dining/Living	6.95m x 3.65m	22'9" x 11'11"
Principal Bedroom	3.95m x 3.60m	12'11" x 11'9"
Bedroom 2	3.70m x 3.15m	12'1" x 10'4"
Balcony	3.50m x 1.65m	11'5" x 5'4"

### F1.9 - 2 bedroom apartment

Kitchen/Dining/Living	6.25m x 4.10m	20'6" x 13'5"
Principal Bedroom	4.15m x 2.75m	13'7" x 9'0"
Bedroom 2	3.55m x 2.90m	11'7" x 9'6"
Balcony	3.50m x 1.65m	11'5" x 5'4"

### F1.11 - 2 bedroom apartment

Kitchen/Dining/Living	6.25m x 4.10m	20'6" x 13'5"
Principal Bedroom	3.95m x 3.25m	12'11" x 10'7"
Bedroom 2	3.85m x 2.60m	12'7" x 8'6"
Balcony	3.50m x 1.65m	11'5" x 5'4"

### F3.12 - 2 bedroom apartment

Kitchen/Dining/Living	6.15m x 4.45m	20'2" x 14'7"
Principal Bedroom	3.85m x 2.75m	12'7" x 9'0"
Bedroom 2	3.05m x 2.80m	10'0" x 9'2"
Balcony	1.65m x 3.50m	5'4" x 11'5"

### F1.13 - 2 bedroom apartment

Kitchen/Dining/Living	7.05m x 3.65m	23'1" x 11'11"
Principal Bedroom	3.85m x 3.55m	12'7" x 11'7"
Bedroom 2	3.80m x 3.15m	12'5" x 10'4"
Balcony	1.65m x 3.50m	5'4" x 11'5"

### F1.15 - 2 bedroom apartment

Kitchen/Dining/Living	6.15m x 4.45m	20'2" x 14'7"
Principal Bedroom	3.95m x 3.55m	12'11" x 11'7"
Bedroom 2	3.95m x 3.30m	12'11" x 10'9"
Terrace	3.65m x 9.80m	11'11" x 32'1"

### F3.16 - 2 bedroom apartment

Kitchen/Dining/Living	3.05m x 7.50m	10'0" x 24'7"
Principal Bedroom	3.85m x 3.10m	12'7" x 10'2"
Bedroom 2	2.70m x 3.10m	8'10" x 10'2"
Terrace	6.60m x 2.15m	21'7" x 7'0"
Balcony	3.50m x 1.65m	11'5" x 5'4"

### F2.1 - 2 bedroom duplex (upper)

See page 52 for details

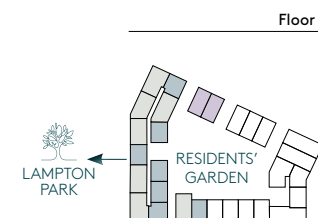
### F2.2 - 2 bedroom duplex (upper)

See page 44 for details

1 bedroom apartment 2 bedroom apartment 2 bedroom duplex

C = Cupboard W = Wardrobe R = Riser Cupboard US = Utility Store [WD] = Washer/Dryer [MVHR] = MVHR  
[HIU] = Heat Interface Unit [ ] = Indicative Wardrobe Position

All floorplans are not to scale. Layouts provide approximate measurements only and are subject to planning. Dimensions, which are taken from the indicated points of measurement, are for guidance only and are not intended to be used for window treatments or items of furniture. Bathroom and kitchen layouts are indicative only and are subject to change. Wardrobe size and position may vary. The total square footage given is an estimate only. In the event of your making an offer you should refer to the contract documentation for information and contractual provisions relating to net sales area. The information contained within this document does not constitute part of any offer, contract, or warranty. Whilst the plans have been prepared with all due care for the convenience of the intending purchaser, the information contained herein is a preliminary guide only.







# FOREST VIEW

## FLOOR 2 WEST



### F1.17 – 1 bedroom apartment

Kitchen/Dining/Living	6.10m x 4.55m	20'0" x 14'11"
Bedroom	3.85m x 3.45m	12'7" x 11'3"
Balcony	1.65m x 3.50m	5'4" x 11'5"

### F1.18 – 1 bedroom apartment

Kitchen/Dining/Living	6.15m x 4.50m	20'2" x 14'9"
Bedroom	3.85m x 3.55m	12'7" x 11'7"
Balcony	1.65m x 3.50m	5'4" x 11'5"

### F1.19 – 1 bedroom apartment

Kitchen/Dining/Living	3.50m x 7.35m	11'5" x 24'1"
Bedroom	3.40m x 2.90m	11'1" x 9'6"
Balcony	3.50m x 1.65m	11'5" x 5'4"

### F1.22 – 1 bedroom apartment

Kitchen/Dining/Living	4.65m x 6.25m	15'3" x 20'6"
Bedroom	3.25m x 3.85m	10'7" x 12'7"
Balcony	3.50m x 1.65m	11'5" x 5'4"

### F1.26 – 1 bedroom apartment

Kitchen/Dining/Living	3.60m x 7.35m	11'9" x 24'1"
Bedroom	3.40m x 2.90m	11'1" x 9'6"
Balcony	1.65m x 3.50m	5'4" x 11'5"

### F1.28 – 1 bedroom apartment

Kitchen/Dining/Living	6.15m x 4.70m	20'2" x 15'5"
Bedroom	3.95m x 3.25m	12'11" x 10'7"
Balcony	1.65m x 3.50m	5'4" x 11'5"

### F2.6 – 1 bedroom apartment

Kitchen/Dining/Living	4.80m x 4.85m	15'8" x 15'10"
Bedroom	2.80m x 4.05m	9'2" x 13'3"
Balcony	3.50m x 1.65m	11'5" x 5'4"

### F2.7 – 1 bedroom apartment

Kitchen/Dining/Living	3.00m x 8.35m	9'10" x 27'4"
Bedroom	2.75m x 4.90m	9'0" x 16'0"
Balcony	3.50m x 1.65m	11'5" x 5'4"

### F3.27 – 1 bedroom apartment

Kitchen/Dining/Living	3.15m x 8.45m	10'4" x 27'8"
Bedroom	2.75m x 5.00m	9'0" x 16'4"
Balcony	3.50m x 1.65m	11'5" x 5'4"

### F3.28 – 1 bedroom apartment

Kitchen/Dining/Living	3.15m x 8.45m	10'4" x 27'8"
Bedroom	2.75m x 5.00m	9'0" x 16'4"
Balcony	3.50m x 1.65m	11'5" x 5'4"

### F1.20 – 2 bedroom apartment

Kitchen/Dining/Living	6.95m x 3.65m	22'9" x 11'11"
Principal Bedroom	3.95m x 3.60m	12'11" x 11'9"
Bedroom 2	3.70m x 3.15m	12'7" x 10'4"
Balcony	3.50m x 1.65m	11'5" x 5'4"

### F1.21 – 2 bedroom apartment

Kitchen/Dining/Living	4.10m x 6.25m	13'5" x 20'6"
Principal Bedroom	2.75m x 4.15m	9'0" x 13'7"
Bedroom 2	3.55m x 2.90m	11'7" x 9'6"
Balcony	3.50m x 1.65m	11'5" x 5'4"

### F1.23 – 2 bedroom apartment

Kitchen/Dining/Living	6.25m x 4.10m	20'6" x 13'5"
Principal Bedroom	3.95m x 3.25m	12'11" x 10'7"
Bedroom 2	3.85m x 2.60m	12'7" x 8'6"
Balcony	1.65m x 3.50m	5'4" x 11'5"

### F1.24 – 2 bedroom apartment

Kitchen/Dining/Living	6.15m x 4.45m	20'2" x 14'7"
Principal Bedroom	3.85m x 2.75m	12'7" x 9'0"
Bedroom 2	3.05m x 2.80m	10'0" x 9'2"
Balcony	1.65m x 3.50m	5'4" x 11'5"

### F1.25 – 2 bedroom apartment

Kitchen/Dining/Living	7.05m x 3.65m	23'1" x 11'11"
Principal Bedroom	3.85m x 3.55m	12'7" x 11'7"
Bedroom 2	3.80m x 3.15m	12'5" x 10'4"
Balcony	1.65m x 3.50m	5'4" x 11'5"

### F1.27 – 2 bedroom apartment

Kitchen/Dining/Living	6.15m x 4.45m	20'2" x 14'7"
Principal Bedroom	3.95m x 3.55m	12'11" x 11'7"
Bedroom 2	3.30m x 3.95m	10'9" x 12'11"
Balcony	1.65m x 3.50m	5'4" x 11'5"

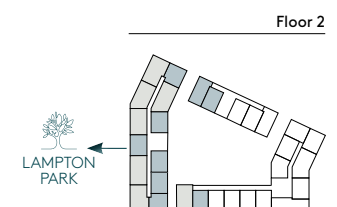
### F3.29 – 2 bedroom apartment

Kitchen/Dining/Living	3.05m x 7.50m	10'0" x 24'7"
Principal Bedroom	3.85m x 3.10m	12'7" x 10'2"
Bedroom 2	2.70m x 3.10m	8'10" x 10'2"
Balcony	3.50m x 1.65m	11'5" x 5'4"

1 bedroom apartment 2 bedroom apartment

C = Cupboard W = Wardrobe R = Riser Cupboard US = Utility Store [WD] = Washer/Dryer [MVHR] = MVHR  
[HIU] = Heat Interface Unit [ ] = Indicative Wardrobe Position

All floorplans are not to scale. Layouts provide approximate measurements only and are subject to planning. Dimensions, which are taken from the indicated points of measurement, are for guidance only and are not intended to be used for window treatments or items of furniture. Bathroom and kitchen layouts are indicative only and are subject to change. Wardrobe size and position may vary. The total square footage given is an estimate only. In the event of your making an offer you should refer to the contract documentation for information and contractual provisions relating to net sales area. The information contained within this document does not constitute part of any offer, contract, or warranty. Whilst the plans have been prepared with all due care for the convenience of the intending purchaser, the information contained herein is a preliminary guide only.





# FOREST VIEW

## FLOOR 3 WEST



### F1.29 – 1 bedroom apartment

Kitchen/Dining/Living	6.10m x 4.55m	20'0" x 14'11"
Bedroom	3.85m x 3.45m	12'7" x 11'3"
Balcony	1.65m x 3.50m	5'4" x 11'5"

### F1.30 – 1 bedroom apartment

Kitchen/Dining/Living	6.15m x 4.50m	20'2" x 14'9"
Bedroom	3.85m x 3.55m	12'7" x 11'7"
Balcony	1.65m x 3.50m	5'4" x 11'5"

### F1.31 – 1 bedroom apartment

Kitchen/Dining/Living	3.50m x 7.35m	11'5" x 24'1"
Bedroom	2.90m x 3.40m	9'6" x 11'1"
Balcony	3.50m x 1.65m	11'5" x 5'4"

### F1.34 – 1 bedroom apartment

Kitchen/Dining/Living	6.25m x 4.65m	20'6" x 15'3"
Bedroom	3.85m x 3.25m	12'7" x 10'7"
Balcony	1.65m x 3.50m	5'4" x 11'5"

### F1.38 – 1 bedroom apartment

Kitchen/Dining/Living	3.60m x 7.35m	11'9" x 24'1"
Bedroom	2.90m x 3.40m	9'6" x 11'1"
Balcony	1.65m x 3.50m	5'4" x 11'5"

### F1.40 – 1 bedroom apartment

Kitchen/Dining/Living	6.15m x 4.70m	20'2" x 15'5"
Bedroom	3.95m x 3.25m	12'11" x 10'7"
Balcony	1.65m x 3.50m	5'4" x 11'5"

### F3.40 – 1 bedroom apartment

Kitchen/Dining/Living	3.15m x 8.45m	10'4" x 27'8"
Bedroom	2.75m x 5.00m	9'0" x 16'4"
Balcony	3.50m x 1.65m	11'5" x 5'4"

### F3.41 – 1 bedroom apartment

Kitchen/Dining/Living	3.15m x 8.45m	10'4" x 27'8"
Bedroom	2.75m x 5.00m	9'0" x 16'4"
Balcony	3.50m x 1.65m	11'5" x 5'4"

### F1.32 – 2 bedroom apartment

Kitchen/Dining/Living	6.95m x 3.65m	22'9" x 11'11"
Principal Bedroom	3.95m x 3.60m	12'11" x 11'9"
Bedroom 2	3.70m x 3.15m	12'1" x 10'4"
Balcony	3.50m x 1.65m	11'5" x 5'4"

### F1.33 – 2 bedroom apartment

Kitchen/Dining/Living	6.25m x 4.10m	20'6" x 13'5"
Principal Bedroom	4.15m x 2.75m	13'7" x 9'0"
Bedroom 2	2.90m x 3.55m	9'6" x 11'7"
Balcony	1.65m x 3.50m	5'4" x 11'5"

### F1.35 – 2 bedroom apartment

Kitchen/Dining/Living	6.25m x 4.10m	20'6" x 13'5"
Principal Bedroom	3.95m x 3.25m	12'11" x 10'7"
Bedroom 2	3.85m x 2.60m	12'7" x 8'6"
Balcony	1.65m x 3.50m	5'4" x 11'5"

### F1.36 – 2 bedroom apartment

Kitchen/Dining/Living	6.15m x 4.45m	20'2" x 14'7"
Principal Bedroom	3.85m x 2.75m	12'7" x 9'0"
Bedroom 2	3.05m x 2.80m	10'0" x 9'2"
Balcony	1.65m x 3.50m	5'4" x 11'5"

### F1.37 – 2 bedroom apartment

Kitchen/Dining/Living	7.05m x 3.65m	23'1" x 11'11"
Principal Bedroom	3.85m x 3.55m	12'7" x 11'7"
Bedroom 2	3.80m x 3.15m	12'5" x 10'4"
Balcony	1.65m x 3.50m	5'4" x 11'5"

### F1.39 – 2 bedroom apartment

Kitchen/Dining/Living	6.15m x 4.45m	20'2" x 14'7"
Principal Bedroom	3.95m x 3.55m	12'11" x 11'7"
Bedroom 2	3.95m x 3.30m	12'11" x 10'9"
Balcony	1.65m x 3.50m	5'4" x 11'5"

### F3.42 – 2 bedroom apartment

Kitchen/Dining/Living	3.05m x 7.50m	10'0" x 24'7"
Principal Bedroom	3.85m x 3.10m	12'7" x 10'2"
Bedroom 2	2.70m x 3.10m	8'10" x 10'2"
Balcony	3.50m x 1.65m	11'5" x 5'4"

### F2.11 – 2 bedroom duplex (lower)

See page 48 for details

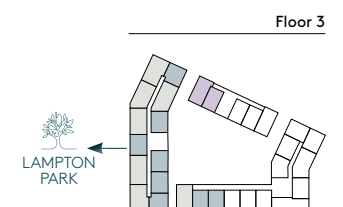
### F2.12 – 2 bedroom duplex (lower)

See page 47 for details

1 bedroom apartment 2 bedroom apartment 2 bedroom duplex

C = Cupboard W = Wardrobe R = Riser Cupboard US = Utility Store [WD] = Washer/Dryer [MVHR] = MVHR [HIU] = Heat Interface Unit [ ] = Indicative Wardrobe Position

All floorplans are not to scale. Layouts provide approximate measurements only and are subject to planning. Dimensions, which are taken from the indicated points of measurement, are for guidance only and are not intended to be used for window treatments or items of furniture. Bathroom and kitchen layouts are indicative only and are subject to change. Wardrobe size and position may vary. The total square footage given is an estimate only. In the event of your making an offer you should refer to the contract documentation for information and contractual provisions relating to net sales area. The information contained within this document does not constitute part of any offer, contract, or warranty. Whilst the plans have been prepared with all due care for the convenience of the intending purchaser, the information contained herein is a preliminary guide only.







# FOREST VIEW

## FLOOR 4 WEST

### F1.41 – 1 bedroom apartment

Kitchen/Dining/Living	6.10m x 4.55m	20'0" x 14'11"
Bedroom	3.85m x 3.45m	12'7" x 11'3"
Balcony	1.65m x 3.50m	5'4" x 11'5"

### F1.42 – 1 bedroom apartment

Kitchen/Dining/Living	6.15m x 4.50m	20'2" x 14'9"
Bedroom	3.85m x 3.55m	12'7" x 11'7"
Balcony	1.65m x 3.50m	5'4" x 11'5"

### F1.43 – 1 bedroom apartment

Kitchen/Dining/Living	3.50m x 7.35m	11'5" x 24'1"
Bedroom	3.40m x 2.90m	11'1" x 9'6"
Balcony	3.50m x 1.65m	11'5" x 5'4"

### F1.46 – 1 bedroom apartment

Kitchen/Dining/Living	6.25m x 4.65m	20'6" x 15'3"
Bedroom	3.85m x 3.25m	12'7" x 10'7"
Balcony	1.65m x 3.50m	5'4" x 11'5"

### F1.50 – 1 bedroom apartment

Kitchen/Dining/Living	3.50m x 7.35m	11'5" x 24'1"
Bedroom	3.40m x 2.90m	11'1" x 2'6"
Balcony	3.50m x 1.65m	11'5" x 5'4"

### F1.52 – 1 bedroom apartment

Kitchen/Dining/Living	6.15m x 4.70m	20'2" x 15'5"
Bedroom	3.95m x 3.25m	12'11" x 10'7"
Balcony	1.65m x 3.50m	5'4" x 11'5"

### F1.44 – 2 bedroom apartment

Kitchen/Dining/Living	6.95m x 3.65m	22'9" x 11'11"
Principal Bedroom	3.95m x 3.60m	12'11" x 11'9"
Bedroom 2	3.70m x 3.15m	12'1" x 10'4"
Balcony	1.65m x 3.50m	5'4" x 11'5"

### F1.45 – 2 bedroom apartment

Kitchen/Dining/Living	6.25m x 4.10m	20'6" x 13'5"
Principal Bedroom	4.15m x 2.75m	13'7" x 9'0"
Bedroom 2	2.90m x 3.55m	9'6" x 11'7"
Balcony	1.65m x 3.50m	5'4" x 11'5"

### F1.47 – 2 bedroom apartment

Kitchen/Dining/Living	6.25m x 4.10m	20'6" x 13'5"
Principal Bedroom	3.95m x 3.25m	12'11" x 10'7"
Bedroom 2	3.85m x 2.60m	12'7" x 8'6"
Balcony	1.65m x 3.50m	5'4" x 11'5"

### F1.48 – 2 bedroom apartment

Kitchen/Dining/Living	6.15m x 4.45m	20'2" x 14'7"
Principal Bedroom	3.85m x 2.75m	12'7" x 9'0"
Bedroom 2	3.05m x 2.80m	10'0" x 9'2"
Balcony	1.65m x 3.50m	5'4" x 11'5"

### F1.49 – 2 bedroom apartment

Kitchen/Dining/Living	7.05m x 3.65m	23'1" x 11'11"
Principal Bedroom	3.85m x 3.55m	12'7" x 11'7"
Bedroom 2	3.80m x 3.15m	12'5" x 10'4"
Balcony	1.65m x 3.50m	5'4" x 11'5"

### F1.51 – 2 bedroom apartment

Kitchen/Dining/Living	6.15m x 4.45m	20'2" x 14'7"
Principal Bedroom	3.95m x 3.55m	12'11" x 11'7"
Bedroom 2	3.95m x 3.30m	12'11" x 10'9"
Balcony	3.50m x 1.65m	11'5" x 5'4"

### F2.11 – 2 bedroom duplex (upper)

See page 48 for details

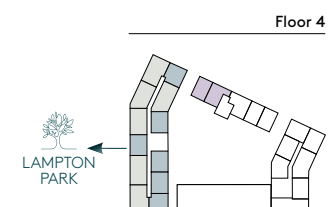
### F2.12 – 2 bedroom duplex (upper)

See page 47 for details

1 bedroom apartment 2 bedroom apartment 2 bedroom duplex

C = Cupboard W = Wardrobe R = Riser Cupboard US = Utility Store [WD] = Washer/Dryer [MVHR] = MVHR  
[HIU] = Heat Interface Unit [ ] = Indicative Wardrobe Position

All floorplans are not to scale. Layouts provide approximate measurements only and are subject to planning. Dimensions, which are taken from the indicated points of measurement, are for guidance only and are not intended to be used for window treatments or items of furniture. Bathroom and kitchen layouts are indicative only and are subject to change. Wardrobe size and position may vary. The total square footage given is an estimate only. In the event of your making an offer you should refer to the contract documentation for information and contractual provisions relating to net sales area. The information contained within this document does not constitute part of any offer, contract, or warranty. Whilst the plans have been prepared with all due care for the convenience of the intending purchaser, the information contained herein is a preliminary guide only.





# FOREST VIEW

## FLOOR 5 WEST

### F1.53 – 1 bedroom apartment

Kitchen/Dining/Living	6.10m x 4.55m	20'0" x 14'11"
Bedroom	3.85m x 3.45m	12'7" x 11'3"
Balcony	1.65m x 3.50m	5'4" x 11'5"

### F1.54 – 1 bedroom apartment

Kitchen/Dining/Living	6.15m x 4.50m	20'2" x 14'9"
Bedroom	3.85m x 3.55m	12'7" x 11'7"
Balcony	1.65m x 3.50m	5'4" x 11'5"

### F1.55 – 1 bedroom apartment

Kitchen/Dining/Living	3.50m x 7.35m	11'5" x 24'1"
Bedroom	3.40m x 2.90m	11'1" x 9'6"
Balcony	3.50m x 1.65m	11'5" x 5'4"

### F1.58 – 1 bedroom apartment

Kitchen/Dining/Living	6.25m x 4.65m	20'6" x 15'3"
Bedroom	3.85m x 3.25m	12'7" x 10'7"
Balcony	1.65m x 3.50m	5'4" x 11'5"

### F1.62 – 1 bedroom apartment

Kitchen/Dining/Living	3.60m x 7.35m	11'9" x 24'1"
Bedroom	3.40m x 2.90m	11'1" x 9'6"
Balcony	1.65m x 3.50m	5'4" x 11'5"

### F1.64 – 1 bedroom apartment

Kitchen/Dining/Living	6.15m x 4.70m	20'2" x 11'11"
Bedroom	3.95m x 3.25m	12'11" x 10'7"
Balcony	1.65m x 3.50m	5'4" x 11'5"

### F1.56 – 2 bedroom apartment

Kitchen/Dining/Living	6.95m x 3.65m	22'9" x 11'11"
Principal Bedroom	3.95m x 3.60m	12'11" x 11'9"
Bedroom 2	3.70m x 3.15m	12'1" x 10'4"
Balcony	3.50m x 1.65m	11'5" x 5'4"

### F1.57 – 2 bedroom apartment

Kitchen/Dining/Living	6.25m x 4.10m	20'6" x 13'5"
Principal Bedroom	4.15m x 2.75m	13'7" x 9'0"
Bedroom 2	2.90m x 3.55m	9'6" x 11'7"
Balcony	1.65m x 3.50m	5'4" x 11'5"

### F1.59 – 2 bedroom apartment

Kitchen/Dining/Living	6.25m x 4.10m	20'6" x 13'5"
Principal Bedroom	3.95m x 3.25m	12'11" x 10'7"
Bedroom 2	3.85m x 2.60m	12'7" x 8'6"
Balcony	1.65m x 3.50m	5'4" x 11'5"

### F1.60 – 2 bedroom apartment

Kitchen/Dining/Living	6.15m x 4.45m	20'2" x 14'7"
Principal Bedroom	3.85m x 2.75m	12'7" x 9'0"
Bedroom 2	2.80m x 3.05m	9'2" x 10'0"
Balcony	1.65m x 3.50m	5'4" x 11'5"

### F1.61 – 2 bedroom apartment

Kitchen/Dining/Living	7.05m x 3.65m	23'1" x 11'11"
Principal Bedroom	3.85m x 3.55m	12'7" x 11'7"
Bedroom 2	3.80m x 3.15m	12'5" x 10'4"
Balcony	1.65m x 3.50m	5'4" x 11'5"

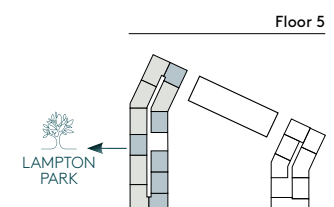
### F1.63 – 2 bedroom apartment

Kitchen/Dining/Living	6.15m x 4.45m	20'2" x 14'7"
Principal Bedroom	3.95m x 3.55m	12'11" x 11'7"
Bedroom 2	3.95m x 3.30m	12'11" x 10'9"
Balcony	1.65m x 3.50m	5'4" x 11'5"

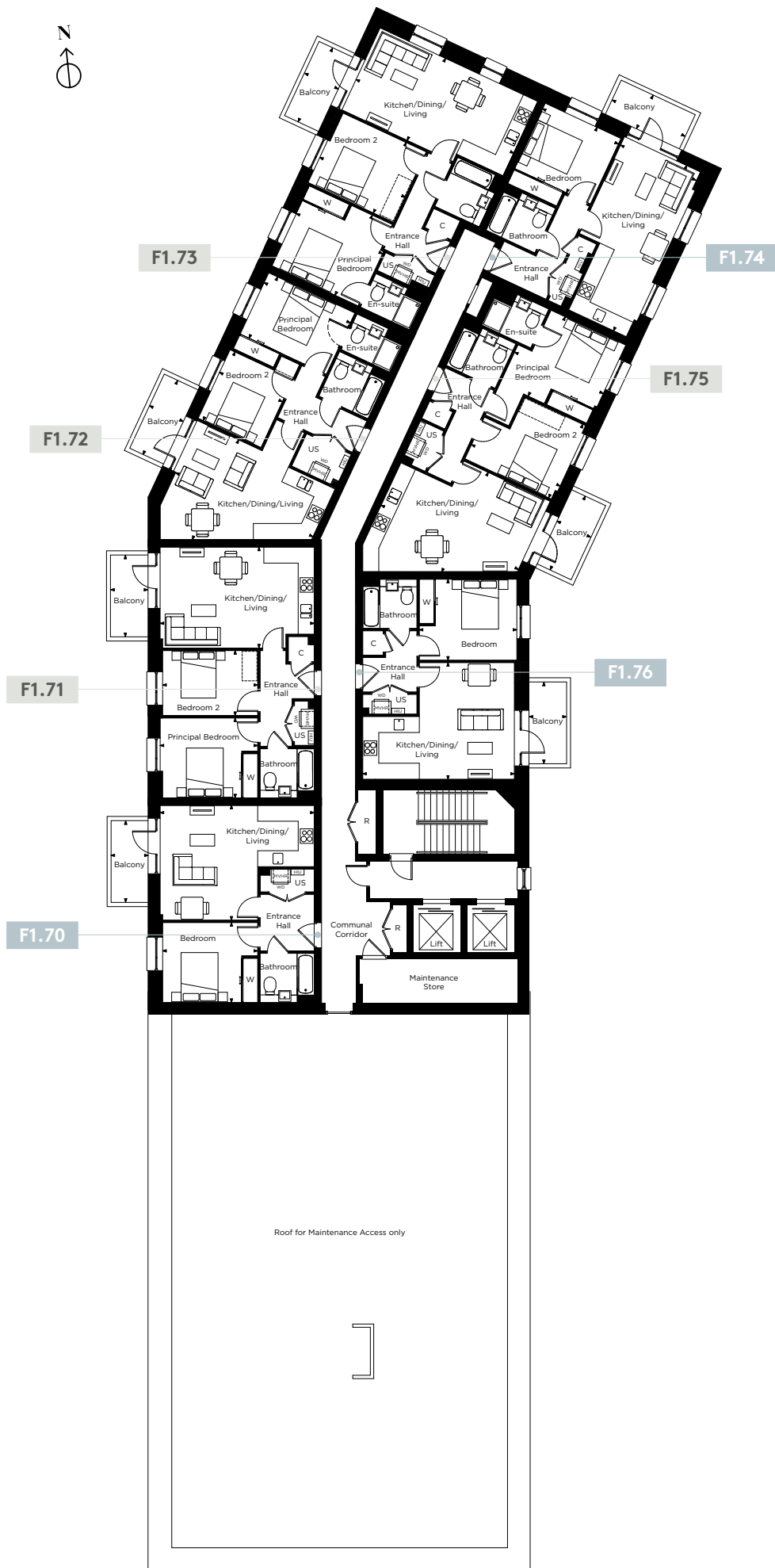
1 bedroom apartment    2 bedroom apartment

C = Cupboard    W = Wardrobe    R = Riser Cupboard    US = Utility Store    [WD] = Washer/Dryer    [MVHR] = MVHR  
[HIU] = Heat Interface Unit    [ ] = Indicative Wardrobe Position

All floorplans are not to scale. Layouts provide approximate measurements only and are subject to planning. Dimensions, which are taken from the indicated points of measurement, are for guidance only and are not intended to be used for window treatments or items of furniture. Bathroom and kitchen layouts are indicative only and are subject to change. Wardrobe size and position may vary. The total square footage given is an estimate only. In the event of your making an offer you should refer to the contract documentation for information and contractual provisions relating to net sales area. The information contained within this document does not constitute part of any offer, contract, or warranty. Whilst the plans have been prepared with all due care for the convenience of the intending purchaser, the information contained herein is a preliminary guide only.







# FOREST VIEW

## FLOOR 6 WEST

### F1.70 – 1 bedroom apartment

Kitchen/Dining/Living		
6.25m x 4.65m	20'6" x 15'3"	
Bedroom		
3.85m x 3.25m	12'7" x 10'7"	
Balcony		
1.65m x 3.50m	5'4" x 11'5"	

### F1.74 – 1 bedroom apartment

Kitchen/Dining/Living		
3.60m x 7.35m	11'9" x 24'1"	
Bedroom		
3.40m x 2.90m	11'1" x 9'6"	
Balcony		
3.50m x 1.65m	11'5" x 5'4"	

### F1.76 – 1 bedroom apartment

Kitchen/Dining/Living		
6.15m x 4.70m	20'2" x 15'5"	
Bedroom		
3.95m x 3.25m	12'11" x 10'7"	
Balcony		
1.65m x 3.50m	5'4" x 11'5"	

### F1.71 – 2 bedroom apartment

Kitchen/Dining/Living		
6.25m x 4.10m	20'6" x 13'5"	
Principal Bedroom		
3.95m x 3.25m	12'11" x 10'7"	
Bedroom 2		
3.85m x 2.60m	12'7" x 8'6"	
Balcony		
1.65m x 3.50m	5'4" x 11'5"	

### F1.72 – 2 bedroom apartment

Kitchen/Dining/Living		
6.15m x 4.45m	20'2" x 14'7"	
Principal Bedroom		
3.85m x 2.75m	12'7" x 9'0"	
Bedroom 2		
2.80m x 3.05m	9'2" x 10'0"	
Balcony		
1.65m x 3.50m	5'4" x 11'5"	

### F1.73 – 2 bedroom apartment

Kitchen/Dining/Living		
7.05m x 3.65m	23'1" x 11'11"	
Principal Bedroom		
3.85m x 3.55m	12'7" x 11'7"	
Bedroom 2		
3.80m x 3.15m	12'5" x 10'4"	
Balcony		
1.65m x 3.50m	5'4" x 11'5"	

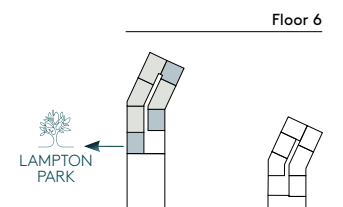
### F1.75 – 2 bedroom apartment

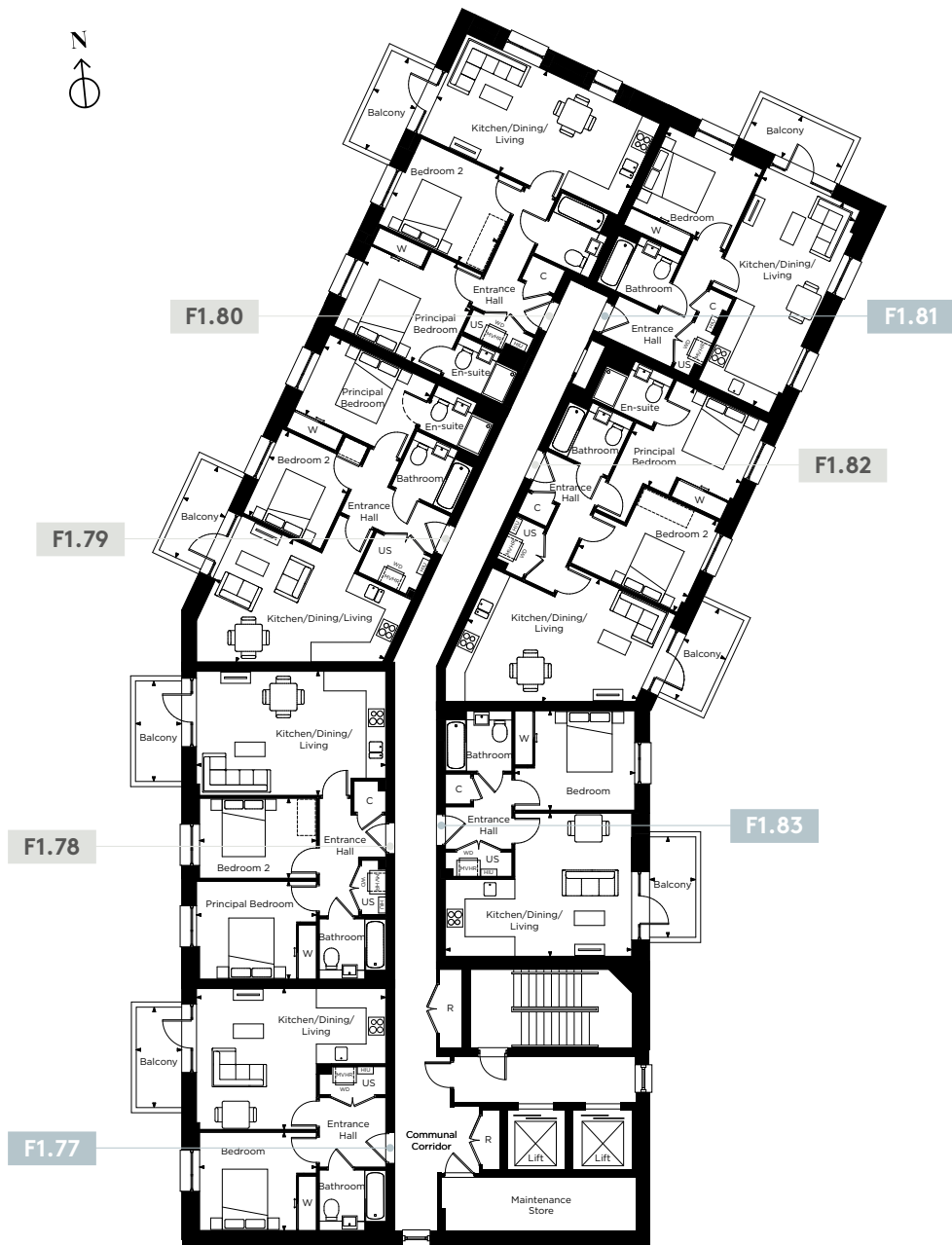
Kitchen/Dining/Living		
6.15m x 4.45m	20'2" x 14'7"	
Principal Bedroom		
3.95m x 3.55m	12'11" x 11'7"	
Bedroom 2		
3.95m x 3.30m	12'11" x 10'9"	
Balcony		
1.65m x 3.50m	5'4" x 11'5"	

1 bedroom apartment 2 bedroom apartment

C = Cupboard W = Wardrobe R = Riser Cupboard US = Utility Store [WD] = Washer/Dryer [MVHR] = MVHR  
[HIU] = Heat Interface Unit [ ] = Indicative Wardrobe Position

All floorplans are not to scale. Layouts provide approximate measurements only and are subject to planning. Dimensions, which are taken from the indicated points of measurement, are for guidance only and are not intended to be used for window treatments or items of furniture. Bathroom and kitchen layouts are indicative only and are subject to change. Wardrobe size and position may vary. The total square footage given is an estimate only. In the event of your making an offer you should refer to the contract documentation for information and contractual provisions relating to net sales area. The information contained within this document does not constitute part of any offer, contract, or warranty. Whilst the plans have been prepared with all due care for the convenience of the intending purchaser, the information contained herein is a preliminary guide only.





# FOREST VIEW

## FLOOR 7 WEST

### F1.77 – 1 bedroom apartment

Kitchen/Dining/Living	6.25m x 4.65m	20'6" x 15'3"
Bedroom	3.85m x 3.25m	12'7" x 10'7"
Balcony	1.65m x 3.50m	5'4" x 11'5"

### F1.81 – 1 bedroom apartment

Kitchen/Dining/Living	3.60m x 7.35m	11'9" x 24'1"
Bedroom	3.40m x 2.90m	11'1" x 9'6"
Balcony	3.50m x 1.65m	11'5" x 5'4"

### F1.83 – 1 bedroom apartment

Kitchen/Dining/Living	6.15m x 4.70m	20'2" x 15'5"
Bedroom	3.95m x 3.25m	12'11" x 10'7"
Balcony	1.65m x 3.50m	5'4" x 11'5"

### F1.78 – 2 bedroom apartment

Kitchen/Dining/Living	6.25m x 4.10m	20'6" x 13'5"
Principal Bedroom	3.85m x 3.25m	12'7" x 10'7"
Bedroom 2	3.95m x 3.25m	12'11" x 10'7"
Balcony	1.65m x 3.50m	5'4" x 11'5"

### F1.79 – 2 bedroom apartment

Kitchen/Dining/Living	6.15m x 4.45m	20'2" x 14'7"
Principal Bedroom	3.85m x 2.75m	12'7" x 9'0"
Bedroom 2	3.05m x 2.80m	10'0" x 9'2"
Balcony	1.65m x 3.50m	5'4" x 11'5"

### F1.80 – 2 bedroom apartment

Kitchen/Dining/Living	7.05m x 3.65m	23'1" x 11'11"
Principal Bedroom	3.85m x 3.55m	12'7" x 11'7"
Bedroom 2	3.80m x 3.15m	12'5" x 10'4"
Balcony	1.65m x 3.50m	5'4" x 11'5"

### F1.82 – 2 bedroom apartment

Kitchen/Dining/Living	6.15m x 4.45m	20'2" x 14'7"
Principal Bedroom	3.95m x 3.55m	12'11" x 11'7"
Bedroom 2	3.95m x 3.30m	12'11" x 10'9"
Balcony	1.65m x 3.50m	5'4" x 11'5"

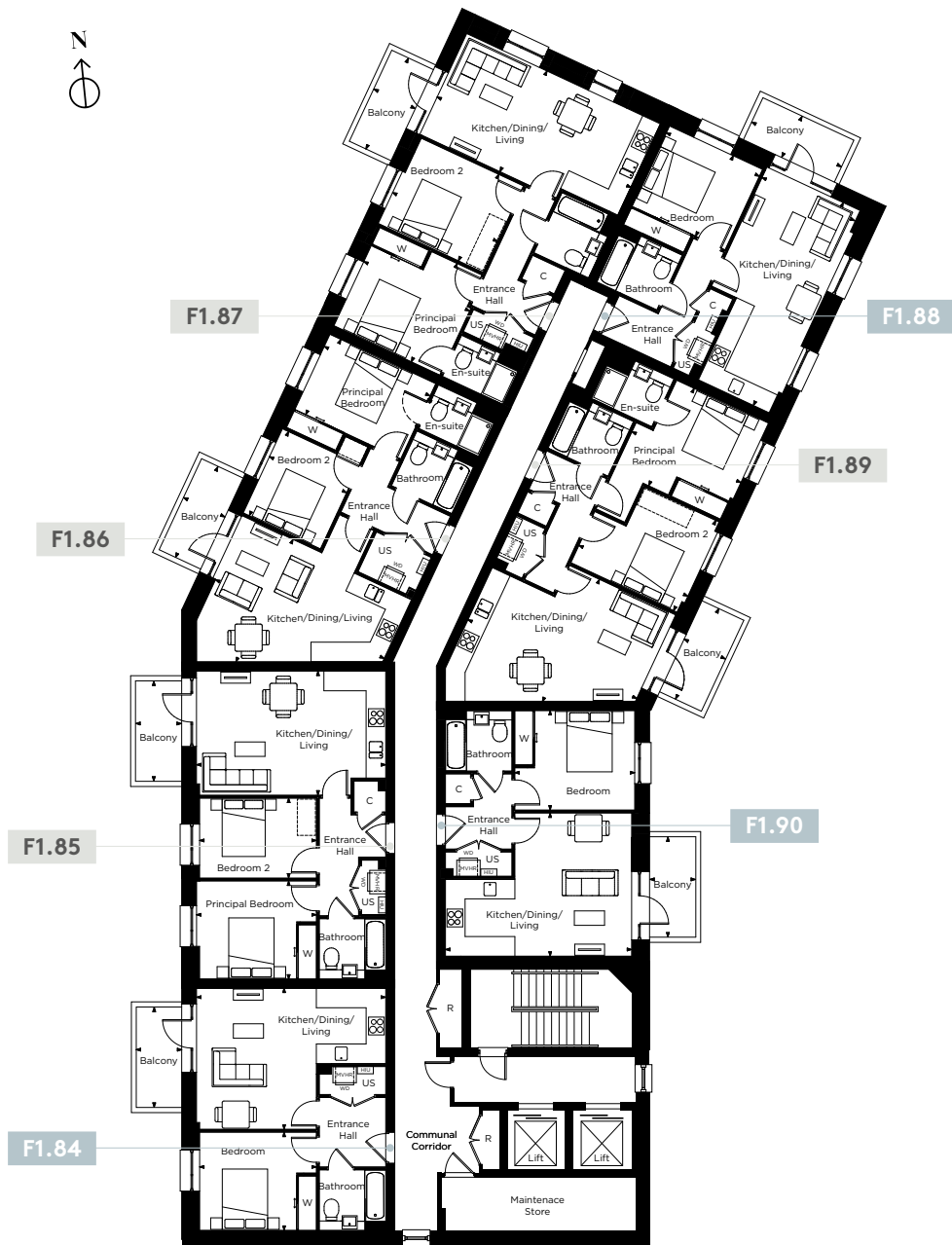
1 bedroom apartment    2 bedroom apartment

C = Cupboard    W = Wardrobe    R = Riser Cupboard    US = Utility Store    [WD] = Washer/Dryer    [MVHR] = MVHR  
[HIU] = Heat Interface Unit    [ ] = Indicative Wardrobe Position

All floorplans are not to scale. Layouts provide approximate measurements only and are subject to planning. Dimensions, which are taken from the indicated points of measurement, are for guidance only and are not intended to be used for window treatments or items of furniture. Bathroom and kitchen layouts are indicative only and are subject to change. Wardrobe size and position may vary. The total square footage given is an estimate only. In the event of your making an offer you should refer to the contract documentation for information and contractual provisions relating to net sales area. The information contained within this document does not constitute part of any offer, contract, or warranty. Whilst the plans have been prepared with all due care for the convenience of the intending purchaser, the information contained herein is a preliminary guide only.







# FOREST VIEW

## FLOOR 8 WEST

### F1.84 – 1 bedroom apartment

Kitchen/Dining/Living		
6.25m x 4.65m	20'6" x 15'3"	
Bedroom		
3.85m x 3.25m	12'7" x 10'7"	
Balcony		
1.65m x 3.50m	5'4" x 11'5"	

### F1.88 – 1 bedroom apartment

Kitchen/Dining/Living		
3.60m x 7.35m	11'9" x 24'1"	
Bedroom		
2.90m x 3.40m	9'6" x 11'1"	
Balcony		
3.50m x 1.65m	11'5" x 5'4"	

### F1.90 – 1 bedroom apartment

Kitchen/Dining/Living		
6.25m x 4.10m	20'6" x 13'5"	
Bedroom		
3.95m x 3.25m	12'11" x 10'7"	
Balcony		
1.65m x 3.50m	5'4" x 11'5"	

### F1.85 – 2 bedroom apartment

Kitchen/Dining/Living		
6.15m x 4.70m	20'2" x 15'5"	
Principal Bedroom		
3.95m x 3.25m	12'11" x 10'7"	
Bedroom 2		
3.85m x 2.60m	12'7" x 8'6"	
Balcony		
1.65m x 3.50m	5'4" x 11'5"	

### F1.86 – 2 bedroom apartment

Kitchen/Dining/Living		
6.15m x 4.45m	20'2" x 14'7"	
Principal Bedroom		
3.85m x 2.75m	12'7" x 9'0"	
Bedroom 2		
3.05m x 2.80m	10'0" x 9'2"	
Balcony		
1.65m x 3.50m	5'4" x 11'5"	

### F1.87 – 2 bedroom apartment

Kitchen/Dining/Living		
7.05m x 3.65m	23'1" x 11'11"	
Principal Bedroom		
3.85m x 3.55m	12'7" x 11'7"	
Bedroom 2		
3.80m x 3.15m	12'5" x 10'4"	
Balcony		
1.65m x 3.50m	5'4" x 11'5"	

### F1.89 – 2 bedroom apartment

Kitchen/Dining/Living		
6.15m x 4.45m	20'2" x 14'7"	
Principal Bedroom		
3.95m x 3.55m	12'11" x 11'7"	
Bedroom 2		
3.95m x 3.30m	12'11" x 10'9"	
Balcony		
1.65m x 3.50m	5'4" x 11'5"	

1 bedroom apartment    2 bedroom apartment

C = Cupboard    W = Wardrobe    R = Riser Cupboard    US = Utility Store    [WD] = Washer/Dryer    [MVHR] = MVHR  
[HIU] = Heat Interface Unit    [ ] = Indicative Wardrobe Position

All floorplans are not to scale. Layouts provide approximate measurements only and are subject to planning. Dimensions, which are taken from the indicated points of measurement, are for guidance only and are not intended to be used for window treatments or items of furniture. Bathroom and kitchen layouts are indicative only and are subject to change. Wardrobe size and position may vary. The total square footage given is an estimate only. In the event of your making an offer you should refer to the contract documentation for information and contractual provisions relating to net sales area. The information contained within this document does not constitute part of any offer, contract, or warranty. Whilst the plans have been prepared with all due care for the convenience of the intending purchaser, the information contained herein is a preliminary guide only.



# FOREST VIEW

## GROUND EAST

### F3.3 - 1 bedroom apartment

Kitchen/Dining/Living  
7.20m x 4.80m 23'7" x 15'8"  
Bedroom  
3.75m x 3.20m 12'3" x 10'5"  
Terrace  
1.40m x 7.00m 4'7" x 22'11"

### F3.4 - 2 bedroom apartment

Kitchen/Dining/Living  
4.00m x 5.75m 13'1" x 18'10"  
Principal Bedroom  
2.75m x 4.00m 9'0" x 13'1"  
Bedroom 2  
2.80m x 4.10m 9'2" x 13'5"  
Terrace  
11.5m x 1.30m 37'8" x 4'3"

### F3.5 - 2 bedroom apartment

Kitchen/Dining/Living  
4.00m x 5.75m 13'1" x 18'10"  
Principal Bedroom  
2.75m x 4.00m 9'0" x 13'1"  
Bedroom 2  
4.10m x 2.80m 9'2" x 13'5"  
Terrace  
11.5m x 1.30m 37'8" x 4'3"

### F2.3 - 2 bedroom duplex (lower)

See page 44 for details

### F2.4 - 2 bedroom duplex (lower)

See page 44 for details

### F2.5 - 2 bedroom duplex (lower)

See page 53 for details

### F3.1 - 3 bedroom duplex (lower)

See page 45 for details

### F3.2 - 3 bedroom duplex (lower)

See page 46 for details



1 bedroom apartment

2 bedroom apartment

2 bedroom duplex

3 bedroom duplex

Active charging points

C = Cupboard

W = Wardrobe

R = Riser Cupboard

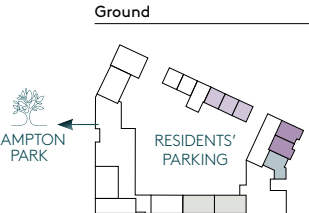
US = Utility Store

WD = Washer/Dryer

MVHR = MVHR

HUI = Heat Interface Unit

= Indicative Wardrobe Position



All floorplans are not to scale. Layouts provide approximate measurements only and are subject to planning. Dimensions, which are taken from the indicated points of measurement, are for guidance only and are not intended to be used for window treatments or items of furniture. Bathroom and kitchen layouts are indicative only and are subject to change. Wardrobe size and position may vary. The total square footage given is an estimate only. In the event of your making an offer you should refer to the contract documentation for information and contractual provisions relating to net sales area. The information contained within this document does not constitute part of any offer, contract, or warranty. Whilst the plans have been prepared with all due care for the convenience of the intending purchaser, the information contained herein is a preliminary guide only.



# FOREST VIEW

## FLOOR 1 EAST

### F3.8 - 1 bedroom apartment

Kitchen/Dining/Living  
6.50m x 4.05m 21'3" x 13'3"  
Bedroom  
3.30m x 3.95m 10'9" x 12'11"  
Balcony  
1.65m x 3.50m 5'4" x 11'5"

### F3.9 - 1 bedroom apartment

Kitchen/Dining/Living  
6.15m x 4.65m 20'2" x 15'3"  
Bedroom  
3.85m x 3.25m 12'7" x 10'7"  
Balcony  
1.65m x 3.50m 5'4" x 11'5"

### F3.11 - 1 bedroom apartment

Kitchen/Dining/Living  
3.15m x 8.45m 10'4" x 27'8"  
Bedroom  
2.75m x 5.00m 9'0" x 16'4"  
Balcony  
3.50m x 1.65m 11'5" x 5'4"

### F3.12 - 1 bedroom apartment

Kitchen/Dining/Living  
3.15m x 8.45m 10'4" x 27'8"  
Bedroom  
2.75m x 5.00m 9'0" x 16'4"  
Balcony  
3.50m x 1.65m 11'5" x 5'4"

### F3.13 - 1 bedroom apartment

Kitchen/Dining/Living  
3.15m x 8.45m 10'4" x 27'8"  
Bedroom  
2.75m x 5.00m 9'0" x 16'4"  
Balcony  
3.50m x 1.65m 11'5" x 5'4"

### F3.7 - 2 bedroom apartment

Kitchen/Dining/Living  
7.70m x 4.10m 25'3" x 13'5"  
Principal Bedroom  
4.00m x 3.65m 13'1" x 11'11"  
Bedroom 2  
3.30m x 4.65m 10'10" x 15'3"  
Terrace  
2.85m x 13.65m 9'4" x 44'9"

### F3.10 - 2 bedroom apartment

Kitchen/Dining/Living  
7.30m x 5.05m 23'11" x 16'6"  
Principal Bedroom  
3.60m x 4.40m 11'9" x 14'4"  
Bedroom 2  
3.30m x 3.00m 10'9" x 9'10"  
Balcony  
1.65m x 3.50m 5'4" x 11'5"

### F2.3 - 2 bedroom duplex (upper)

See page 44 for details

### F2.4 - 2 bedroom duplex (upper)

See page 44 for details

### F2.5 - 2 bedroom duplex (upper)

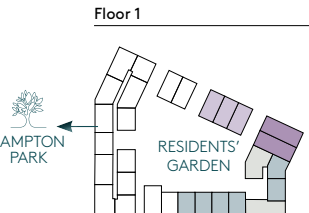
See page 53 for details

### F3.1 - 3 bedroom duplex (upper)

See page 45 for details

### F3.2 - 3 bedroom duplex (upper)

See page 46 for details



1 bedroom apartment 2 bedroom apartment 2 bedroom duplex 3 bedroom duplex

C = Cupboard W = Wardrobe R = Riser Cupboard US = Utility Store WD = Washer/Dryer MVHR = MVHR  
HIU = Heat Interface Unit [ ] = Indicative Wardrobe Position

All floorplans are not to scale. Layouts provide approximate measurements only and are subject to planning. Dimensions, which are taken from the indicated points of measurement, are for guidance only and are not intended to be used for window treatments or items of furniture. Bathroom and kitchen layouts are indicative only and are subject to change. Wardrobe size and position may vary. The total square footage given is an estimate only. In the event of your making an offer you should refer to the contract documentation for information and contractual provisions relating to net sales area. The information contained within this document does not constitute part of any offer, contract, or warranty. Whilst the plans have been prepared with all due care for the convenience of the intending purchaser, the information contained herein is a preliminary guide only.

# FOREST VIEW

## FLOOR 2 EAST



### F2.8 – 1 bedroom apartment

Kitchen/Dining/Living	3.00m x 8.35m	9'10" x 27'5"
Bedroom	2.75m x 4.90m	9'0" x 16'1"
Balcony	3.50m x 1.65m	11'5" x 5'4"

### F2.9 – 1 bedroom apartment

Kitchen/Dining/Living	3.00m x 8.35m	9'10" x 27'5"
Bedroom	2.75m x 4.90m	9'0" x 16'1"
Balcony	3.50m x 1.65m	11'5" x 5'4"

### F2.10 – 1 bedroom apartment

Kitchen/Dining/Living	4.95m x 4.80m	16'2" x 15'8"
Bedroom	2.85m x 4.00m	9'4" x 13'1"
Balcony	3.50m x 1.65m	11'5" x 5'4"

### F3.17 – 1 bedroom apartment

Kitchen/Dining/Living	6.15m x 5.70m	20'2" x 18'8"
Bedroom	3.75m x 3.35m	12'3" x 10'11"
Balcony	1.65m x 3.50m	5'4" x 11'5"

### F3.18 – 1 bedroom apartment

Kitchen/Dining/Living	6.25m x 4.75m	20'6" x 15'7"
Bedroom	3.65m x 3.40m	11'11" x 11'1"
Balcony	1.65m x 3.50m	5'4" x 11'5"

### F3.19 – 1 bedroom apartment

Kitchen/Dining/Living	3.85m x 6.35m	12'7" x 20'10"
Bedroom	4.00m x 2.95m	13'1" x 9'8"
Balcony	3.50m x 1.65m	11'5" x 5'4"

### F3.20 – 1 bedroom apartment

Kitchen/Dining/Living	6.25m x 5.05m	20'6" x 16'6"
Bedroom	4.20m x 2.75m	13'9" x 9'0"
Balcony	1.65m x 3.50m	5'4" x 11'5"

### F3.22 – 1 bedroom apartment

Kitchen/Dining/Living	6.15m x 4.65m	20'2" x 15'3"
Bedroom	3.85m x 3.25m	12'7" x 10'7"
Balcony	1.65m x 3.50m	5'4" x 11'5"

### F3.24 – 1 bedroom apartment

Kitchen/Dining/Living	3.15m x 8.45m	10'4" x 27'8"
Bedroom	2.75m x 5.00m	9'0" x 16'4"
Balcony	3.50m x 1.65m	11'5" x 5'4"

### F3.25 – 1 bedroom apartment

Kitchen/Dining/Living	3.15m x 8.45m	10'4" x 27'8"
Bedroom	2.75m x 5.00m	9'0" x 16'4"
Balcony	3.50m x 1.65m	11'5" x 5'4"

### F3.26 – 1 bedroom apartment

Kitchen/Dining/Living	3.15m x 8.45m	10'4" x 27'8"
Bedroom	2.75m x 5.00m	9'0" x 16'4"
Balcony	3.50m x 1.65m	11'5" x 5'4"

### F3.21 – 2 bedroom apartment

Kitchen/Dining/Living	6.15m x 4.15m	20'2" x 13'7"
Principal Bedroom	3.95m x 4.20m	12'11" x 13'9"
Bedroom 2	3.85m x 2.55m	12'7" x 8'4"
Balcony	1.65m x 3.50m	5'4" x 11'5"

### F3.23 – 2 bedroom apartment

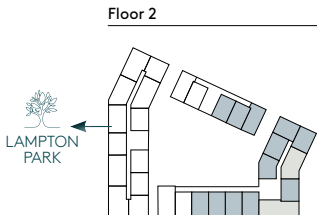
Kitchen/Dining/Living	7.30m x 5.05m	23'11" x 16'6"
Principal Bedroom	3.60m x 4.40m	11'9" x 14'5"
Bedroom 2	3.30m x 3.00m	10'9" x 9'10"
Balcony	1.65m x 3.50m	5'4" x 11'5"



1 bedroom apartment 2 bedroom apartment

C = Cupboard W = Wardrobe R = Riser Cupboard US = Utility Store [WD] = Washer/Dryer [MVHR] = MVHR  
[HIU] = Heat Interface Unit [ ] = Indicative Wardrobe Position

All floorplans are not to scale. Layouts provide approximate measurements only and are subject to planning. Dimensions, which are taken from the indicated points of measurement, are for guidance only and are not intended to be used for window treatments or items of furniture. Bathroom and kitchen layouts are indicative only and are subject to change. Wardrobe size and position may vary. The total square footage given is an estimate only. In the event of your making an offer you should refer to the contract documentation for information and contractual provisions relating to net sales area. The information contained within this document does not constitute part of any offer, contract, or warranty. Whilst the plans have been prepared with all due care for the convenience of the intending purchaser, the information contained herein is a preliminary guide only.





# FOREST VIEW

## FLOOR 3 EAST



### F3.30 – 1 bedroom apartment

Kitchen/Dining/Living		
6.15m x 5.55m	20'2" x 18'2"	
Bedroom		
3.75m x 3.35m	12'3" x 10'11"	
Balcony		
1.65m x 3.50m	5'4" x 11'5"	

### F3.31 – 1 bedroom apartment

Kitchen/Dining/Living		
6.25m x 4.75m	20'6" x 15'7"	
Bedroom		
3.65m x 3.40m	11'11" x 11'1"	
Balcony		
1.65m x 3.50m	5'4" x 11'5"	

### F3.32 – 1 bedroom apartment

Kitchen/Dining/Living		
3.85m x 6.35m	12'7" x 20'10"	
Bedroom		
4.00m x 2.95m	13'1" x 9'8"	
Balcony		
3.50m x 1.65m	11'5" x 5'4"	

### F3.33 – 1 bedroom apartment

Kitchen/Dining/Living		
6.25m x 5.05m	20'6" x 16'6"	
Bedroom		
4.20m x 2.75m	13'9" x 9'0"	
Balcony		
1.65m x 3.50m	5'4" x 11'5"	

### F3.35 – 1 bedroom apartment

Kitchen/Dining/Living		
6.15m x 4.65m	20'2" x 15'3"	
Bedroom		
3.85m x 3.25m	12'7" x 10'7"	
Balcony		
1.65m x 3.50m	5'4" x 11'5"	

### F3.37 – 1 bedroom apartment

Kitchen/Dining/Living		
3.15m x 8.45m	10'4" x 27'8"	
Bedroom		
2.75m x 5.00m	9'0" x 16'4"	
Balcony		
3.50m x 1.65m	11'5" x 5'4"	

### F3.38 – 1 bedroom apartment

Kitchen/Dining/Living		
3.15m x 8.45m	10'4" x 27'8"	
Bedroom		
2.75m x 5.00m	9'0" x 16'4"	
Balcony		
3.50m x 1.65m	11'5" x 5'4"	

### F3.39 – 1 bedroom apartment

Kitchen/Dining/Living		
3.15m x 8.45m	10'4" x 27'8"	
Bedroom		
2.75m x 5.00m	9'0" x 16'4"	
Balcony		
3.50m x 1.65m	11'5" x 5'4"	

### F3.34 – 2 bedroom apartment

Kitchen/Dining/Living		
6.15m x 4.15m	20'2" x 10'4"	
Principal Bedroom		
3.95m x 4.20m	12'11" x 13'9"	
Bedroom 2		
3.85m x 2.55m	12'7" x 8'4"	
Balcony		
1.65m x 3.50m	5'4" x 11'5"	

### F3.36 – 2 bedroom apartment

Kitchen/Dining/Living		
7.30m x 5.05m	23'11" x 16'6"	
Principal Bedroom		
3.60m x 4.40m	11'9" x 14'5"	
Bedroom 2		
3.30m x 3.00m	10'9" x 9'10"	
Balcony		
1.65m x 3.50m	5'4" x 11'5"	

### F2.13 – 2 bedroom duplex (lower)

See page 50 for details

### F2.14 – 2 bedroom duplex (lower)

See page 49 for details

### F2.15 – 2 bedroom duplex (lower)

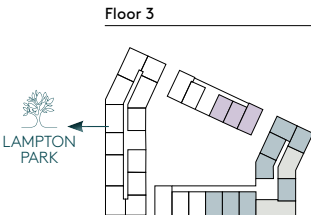
See page 51 for details



1 bedroom apartment 2 bedroom apartment 2 bedroom duplex

C = Cupboard W = Wardrobe R = Riser Cupboard US = Utility Store [WD] = Washer/Dryer [MVHR] = MVHR  
[HIU] = Heat Interface Unit [ ] = Indicative Wardrobe Position

All floorplans are not to scale. Layouts provide approximate measurements only and are subject to planning. Dimensions, which are taken from the indicated points of measurement, are for guidance only and are not intended to be used for window treatments or items of furniture. Bathroom and kitchen layouts are indicative only and are subject to change. Wardrobe size and position may vary. The total square footage given is an estimate only. In the event of your making an offer you should refer to the contract documentation for information and contractual provisions relating to net sales area. The information contained within this document does not constitute part of any offer, contract, or warranty. Whilst the plans have been prepared with all due care for the convenience of the intending purchaser, the information contained herein is a preliminary guide only.



# FOREST VIEW

## FLOOR 4 EAST



### F3.43 – 1 bedroom apartment

Kitchen/Dining/Living		
6.15m x 5.55m	20'2" x 18'2"	
Bedroom		
3.75m x 3.35m	12'3" x 10'11"	
Balcony		
1.65m x 3.50m	5'4" x 11'5"	

### F3.44 – 1 bedroom apartment

Kitchen/Dining/Living		
6.25m x 4.75m	20'6" x 15'7"	
Bedroom		
3.65m x 3.40m	11'11" x 11'1"	
Balcony		
1.65m x 3.50m	5'4" x 11'5"	

### F3.45 – 1 bedroom apartment

Kitchen/Dining/Living		
3.85m x 6.35m	12'7" x 20'10"	
Bedroom		
4.00m x 2.95m	13'1" x 9'8"	
Balcony		
3.50m x 1.65m	11'5" x 5'4"	

### F3.46 – 1 bedroom apartment

Kitchen/Dining/Living		
6.25m x 5.05m	20'6" x 16'6"	
Bedroom		
4.20m x 2.75m	13'9" x 9'0"	
Balcony		
1.65m x 3.50m	5'4" x 11'5"	

### F3.48 – 1 bedroom apartment

Kitchen/Dining/Living		
6.15m x 4.65m	20'2" x 15'3"	
Bedroom		
3.85m x 3.25m	12'7" x 10'7"	
Balcony		
1.65m x 3.50m	5'4" x 11'5"	

### F3.47 – 2 bedroom apartment

Kitchen/Dining/Living		
6.15m x 4.15m	20'2" x 13'7"	
Principal Bedroom		
3.95m x 4.20m	12'11" x 13'9"	
Bedroom 2		
3.85m x 2.55m	12'7" x 8'4"	
Balcony		
1.65m x 3.50m	5'4" x 11'5"	

### F3.49 – 2 bedroom apartment

Kitchen/Dining/Living		
7.30m x 5.05m	23'11" x 16'6"	
Principal Bedroom		
3.60m x 4.40m	11'9" x 14'5"	
Bedroom 2		
3.30m x 3.00m	10'9" x 9'10"	
Balcony		
1.65m x 3.50m	5'4" x 11'5"	

### F2.13 - 2 bedroom duplex (upper)

See page 50 for details

### F2.14 - 2 bedroom duplex (upper)

See page 49 for details

### F2.15 - 2 bedroom duplex (upper)

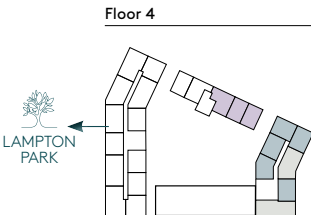
See page 51 for details



1 bedroom apartment   2 bedroom apartment   2 bedroom duplex

C = Cupboard   W = Wardrobe   R = Riser Cupboard   US = Utility Store   WD = Washer/Dryer   MVHR = MVHR  
HIU = Heat Interface Unit   [ ] = Indicative Wardrobe Position

All floorplans are not to scale. Layouts provide approximate measurements only and are subject to planning. Dimensions, which are taken from the indicated points of measurement, are for guidance only and are not intended to be used for window treatments or items of furniture. Bathroom and kitchen layouts are indicative only and are subject to change. Wardrobe size and position may vary. The total square footage given is an estimate only. In the event of your making an offer you should refer to the contract documentation for information and contractual provisions relating to net sales area. The information contained within this document does not constitute part of any offer, contract, or warranty. Whilst the plans have been prepared with all due care for the convenience of the intending purchaser, the information contained herein is a preliminary guide only.



# FOREST VIEW

## FLOOR 5 EAST

### F3.50 – 1 bedroom apartment

Kitchen/Dining/Living	6.15m x 5.55m	20'2" x 18'2"
Bedroom	3.75m x 3.35m	12'3" x 10'11"
Balcony	1.65m x 3.50m	5'4" x 11'5"

### F3.51 – 1 bedroom apartment

Kitchen/Dining/Living	6.25m x 4.75m	20'6" x 15'7"
Bedroom	3.65m x 3.40m	11'11" x 11'1"
Balcony	1.65m x 3.50m	5'4" x 11'5"

### F3.52 – 1 bedroom apartment

Kitchen/Dining/Living	3.85m x 6.35m	12'7" x 20'10"
Bedroom	4.00m x 2.95m	13'1" x 9'8"
Balcony	3.50m x 1.65m	11'5" x 5'4"

### F3.53 – 1 bedroom apartment

Kitchen/Dining/Living	7.30m x 5.05m	23'11" x 16'6"
Bedroom	3.60m x 4.40m	11'9" x 14'5"
Balcony	1.65m x 3.50m	5'4" x 11'5"

### F3.55 – 1 bedroom apartment

Kitchen/Dining/Living	6.25m x 5.05m	20'6" x 16'6"
Bedroom	4.20m x 2.75m	13'9" x 9'0"
Balcony	1.65m x 3.50m	5'4" x 11'5"

### F3.54 – 2 bedroom apartment

Kitchen/Dining/Living	6.15m x 4.15m	20'2" x 13'7"
Principal Bedroom	3.95m x 4.20m	12'11" x 13'9"
Bedroom 2	3.85m x 2.55m	12'7" x 8'4"
Balcony	1.65m x 3.50m	5'4" x 11'5"

### F3.56 – 2 bedroom apartment

Kitchen/Dining/Living	6.15m x 4.65m	20'2" x 15'3"
Principal Bedroom	3.85m x 3.25m	12'7" x 10'7"
Bedroom 2	3.30m x 3.00m	10'9" x 9'10"
Balcony	1.65m x 3.50m	5'4" x 11'5"



1 bedroom apartment

2 bedroom apartment

C = Cupboard   W = Wardrobe   R = Riser Cupboard   US = Utility Store   

WD

 = Washer/Dryer   

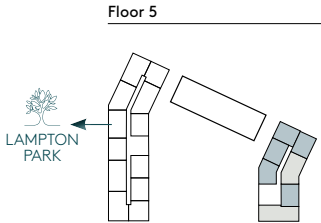
MVHR

 = MVHR  

HU

 = Heat Interface Unit    = Indicative Wardrobe Position

All floorplans are not to scale. Layouts provide approximate measurements only and are subject to planning. Dimensions, which are taken from the indicated points of measurement, are for guidance only and are not intended to be used for window treatments or items of furniture. Bathroom and kitchen layouts are indicative only and are subject to change. Wardrobe size and position may vary. The total square footage given is an estimate only. In the event of your making an offer you should refer to the contract documentation for information and contractual provisions relating to net sales area. The information contained within this document does not constitute part of any offer, contract, or warranty. Whilst the plans have been prepared with all due care for the convenience of the intending purchaser, the information contained herein is a preliminary guide only.





# FOREST VIEW

## FLOOR 6 EAST



### F3.57 – 1 bedroom apartment

Kitchen/Dining/Living		
6.15m x 5.55m	20'2" x 18'2"	
Bedroom		
3.75m x 3.35m	12'3" x 10'11"	
Balcony		
1.65m x 3.50m	5'4" x 11'5"	

### F3.58 – 1 bedroom apartment

Kitchen/Dining/Living		
6.15m x 4.15m	20'2" x 13'7"	
Bedroom		
3.95m x 4.20m	12'11" x 13'9"	
Balcony		
1.65m x 3.50m	5'4" x 11'5"	

### F3.59 – 1 bedroom apartment

Kitchen/Dining/Living		
4.65m x 6.15m	15'3" x 20'2"	
Bedroom		
3.85m x 3.25m	12'7" x 10'7"	
Balcony		
3.50m x 1.65m	11'5" x 5'4"	

### F3.60 – 1 bedroom apartment

Kitchen/Dining/Living		
7.30m x 5.00m	23'11" x 16'4"	
Bedroom		
4.40m x 3.60m	14'5" x 11'9"	
Balcony		
1.65m x 3.50m	5'4" x 11'5"	

### F3.62 – 1 bedroom apartment

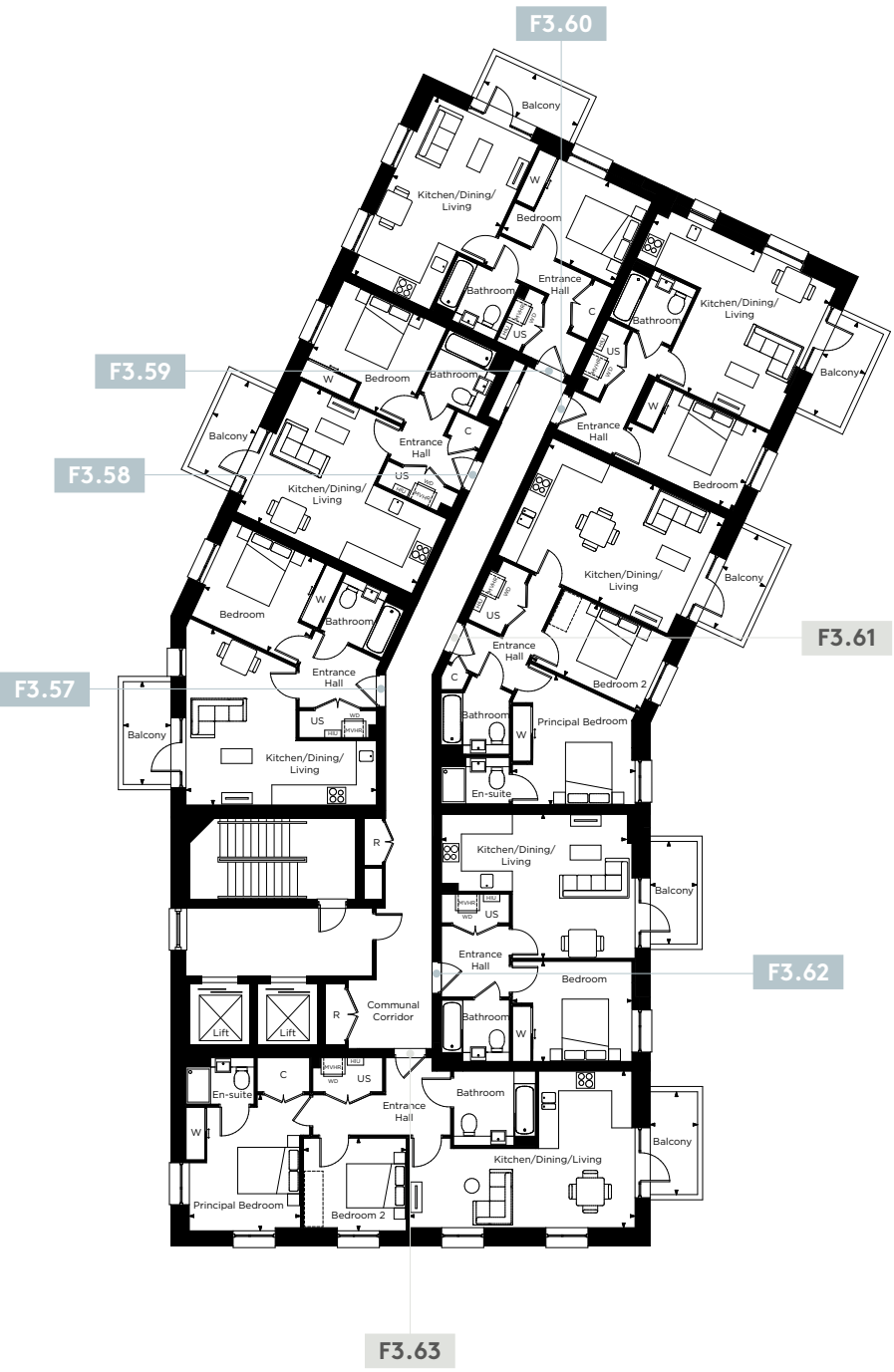
Kitchen/Dining/Living		
6.25m x 5.05m	20'6" x 16'6"	
Bedroom		
4.20m x 2.75m	13'9" x 9'0"	
Balcony		
1.65m x 3.50m	5'4" x 11'5"	

### F3.61 – 2 bedroom apartment

Kitchen/Dining/Living		
6.25m x 4.75m	20'6" x 15'7"	
Principal Bedroom		
3.40m x 3.65m	11'1" x 11'11"	
Bedroom 2		
3.85m x 2.55m	12'7" x 8'4"	
Balcony		
1.65m x 3.50m	5'4" x 11'5"	

### F3.63 – 2 bedroom apartment

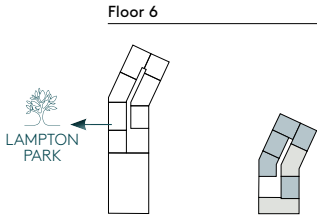
Kitchen/Dining/Living		
6.35m x 3.85m	20'10" x 12'7"	
Principal Bedroom		
2.95m x 4.00m	9'8" x 13'1"	
Bedroom 2		
3.00m x 3.30m	9'10" x 10'9"	
Balcony		
1.65m x 3.50m	5'4" x 11'5"	



1 bedroom apartment      2 bedroom apartment

C = Cupboard    W = Wardrobe    R = Riser Cupboard    US = Utility Store    [WD] = Washer/Dryer    [MVHR] = MVHR  
[HIU] = Heat Interface Unit    [ ] = Indicative Wardrobe Position

All floorplans are not to scale. Layouts provide approximate measurements only and are subject to planning. Dimensions, which are taken from the indicated points of measurement, are for guidance only and are not intended to be used for window treatments or items of furniture. Bathroom and kitchen layouts are indicative only and are subject to change. Wardrobe size and position may vary. The total square footage given is an estimate only. In the event of your making an offer you should refer to the contract documentation for information and contractual provisions relating to net sales area. The information contained within this document does not constitute part of any offer, contract, or warranty. Whilst the plans have been prepared with all due care for the convenience of the intending purchaser, the information contained herein is a preliminary guide only.





# FOREST VIEW

## DUPLEXES



Computer generated image is indicative only.



# FOREST VIEW

## DUPLEX TYPE 1



# FOREST VIEW

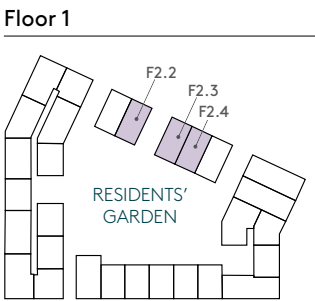
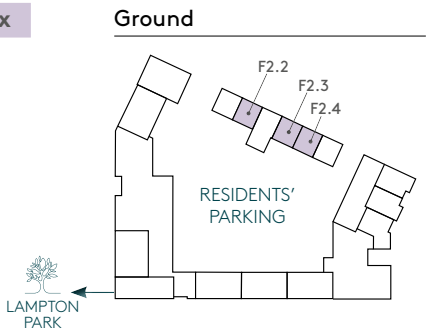
## DUPLEX TYPE 2



F2.2, F2.3\*, F2.4\* – 2 bedroom duplex

Kitchen/Dining/Living	2.85m x 5.65m	9'4" x 18'6"
Family Room	3.15m x 3.60m	10'4" x 11'9"
Principal Bedroom	4.45m x 3.70m	14'7" x 12'1"
Bedroom 2	2.20m x 4.40m	7'2" x 14'5"
Terrace	6.00m x 2.40m	19'8" x 7'10"

\*Handed



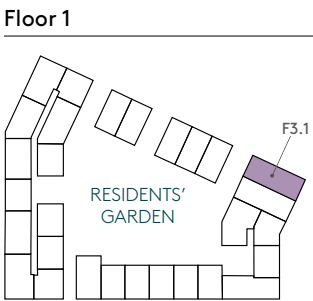
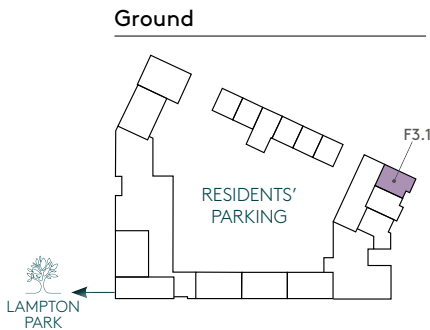
C = Cupboard W = Wardrobe US = Utility Store WD = Washer/Dryer MVHR = MVHR HIU = Heat Interface Unit [ ] = Indicative Wardrobe Position



All floorplans are not to scale. Layouts provide approximate measurements only and are subject to planning. Dimensions, which are taken from the indicated points of measurement, are for guidance only and are not intended to be used for window treatments or items of furniture. Bathroom and kitchen layouts are indicative only and are subject to change. Wardrobe size and position may vary. The total square footage given is an estimate only. In the event of your making an offer you should refer to the contract documentation for information and contractual provisions relating to net sales area. The information contained within this document does not constitute part of any offer, contract, or warranty. Whilst the plans have been prepared with all due care for the convenience of the intending purchaser, the information contained herein is a preliminary guide only.

F3.1 – 3 bedroom duplex

Kitchen/Dining/Living	8.45m x 3.35m	27'8" x 10'11"
Family Room	5.15m x 3.40m	16'10" x 11'1"
Principal Bedroom	6.95m x 2.75m	22'9" x 9'0"
Bedroom 2	6.95m x 2.65m	22'9" x 8'8"
Bedroom 3	5.85m x 2.15m	19'2" x 7'0"
Terrace	5.30m x 11.35m	17'4" x 37'2"



C = Cupboard W = Wardrobe US = Utility Store WD = Washer/Dryer MVHR = MVHR HIU = Heat Interface Unit [ ] = Indicative Wardrobe Position



All floorplans are not to scale. Layouts provide approximate measurements only and are subject to planning. Dimensions, which are taken from the indicated points of measurement, are for guidance only and are not intended to be used for window treatments or items of furniture. Bathroom and kitchen layouts are indicative only and are subject to change. Wardrobe size and position may vary. The total square footage given is an estimate only. In the event of your making an offer you should refer to the contract documentation for information and contractual provisions relating to net sales area. The information contained within this document does not constitute part of any offer, contract, or warranty. Whilst the plans have been prepared with all due care for the convenience of the intending purchaser, the information contained herein is a preliminary guide only.



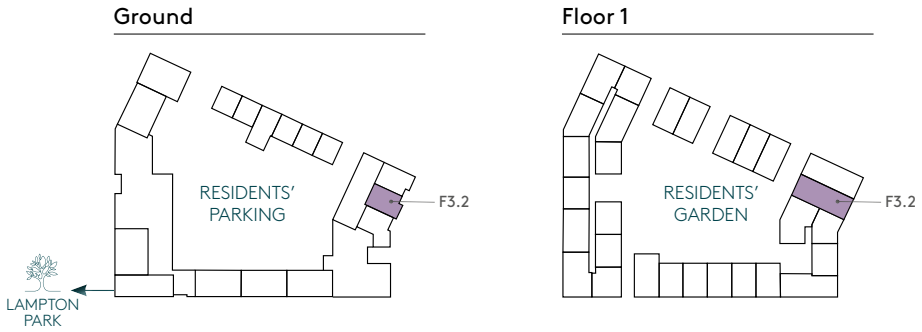
# FOREST VIEW

## DUPLEX TYPE 3



F3.2 – 3 bedroom duplex

Kitchen/Dining/Living	8.45m x 3.50m	27'8" x 11'5"
Family Room	5.15m x 3.35m	16'10" x 10'11"
Principal Bedroom	6.95m x 2.75m	22'9" x 9'0"
Bedroom 2	6.95m x 2.75m	22'9" x 9'0"
Bedroom 3	6.25m x 2.15m	20'6" x 7'0"
Terrace	4.05m x 5.95m	13'3" x 19'6"



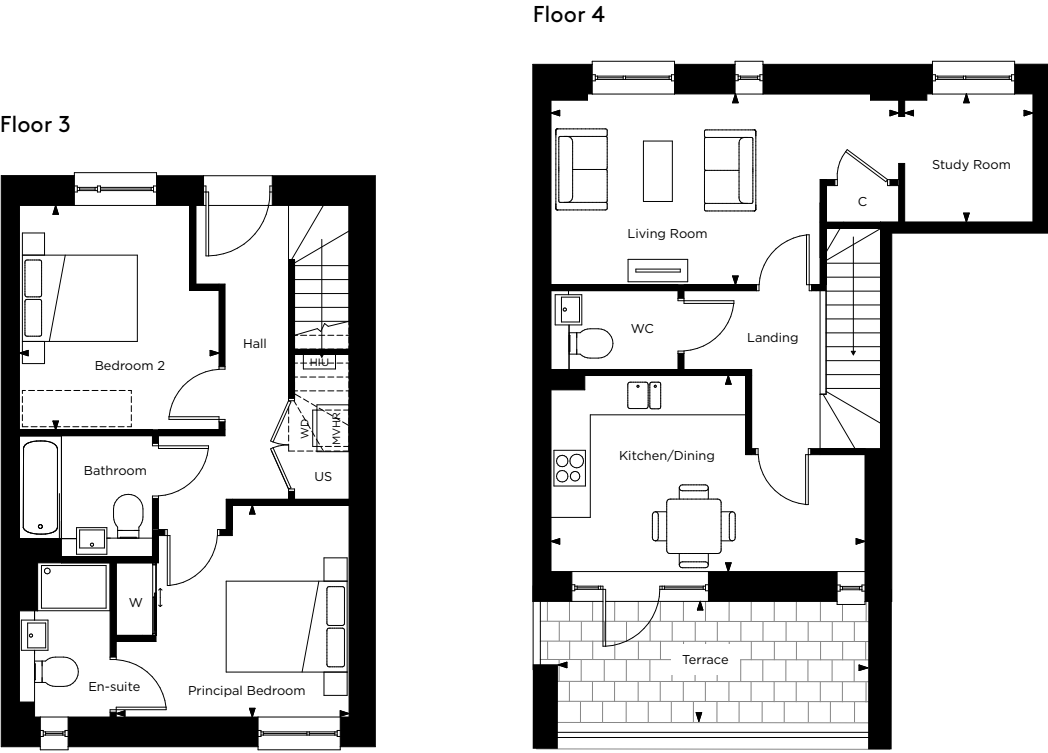
C = Cupboard W = Wardrobe US = Utility Store WD = Washer/Dryer MVHR = MVHR HIU = Heat Interface Unit [ ] = Indicative Wardrobe Position

N

All floorplans are not to scale. Layouts provide approximate measurements only and are subject to planning. Dimensions, which are taken from the indicated points of measurement, are for guidance only and are not intended to be used for window treatments or items of furniture. Bathroom and kitchen layouts are indicative only and are subject to change. Wardrobe size and position may vary. The total square footage given is an estimate only. In the event of your making an offer you should refer to the contract documentation for information and contractual provisions relating to net sales area. The information contained within this document does not constitute part of any offer, contract, or warranty. Whilst the plans have been prepared with all due care for the convenience of the intending purchaser, the information contained herein is a preliminary guide only.

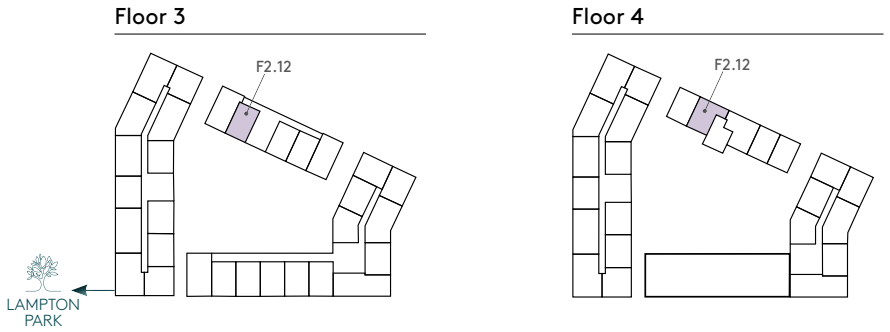
# FOREST VIEW

## DUPLEX TYPE 4



F2.12 – 2 bedroom duplex

Kitchen/Dining	5.15m x 3.20m	16'10" x 10'5"
Living Room	5.75m x 3.05m	18'10" x 10'0"
Principal Bedroom	3.85m x 3.50m	12'7" x 11'5"
Bedroom 2	5.75m x 3.15m	18'10" x 10'4"
Study Room	2.10m x 2.10m	6'10" x 6'10"
Terrace	5.35m x 1.95m	17'6" x 6'4"



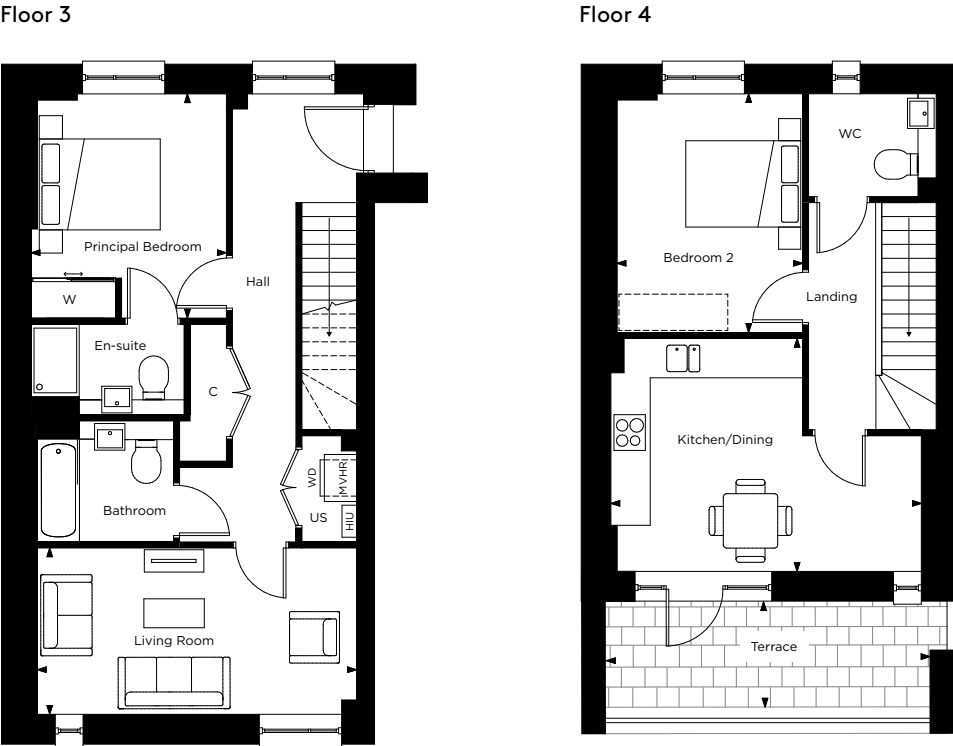
C = Cupboard W = Wardrobe US = Utility Store WD = Washer/Dryer MVHR = MVHR HIU = Heat Interface Unit [ ] = Indicative Wardrobe Position

N

All floorplans are not to scale. Layouts provide approximate measurements only and are subject to planning. Dimensions, which are taken from the indicated points of measurement, are for guidance only and are not intended to be used for window treatments or items of furniture. Bathroom and kitchen layouts are indicative only and are subject to change. Wardrobe size and position may vary. The total square footage given is an estimate only. In the event of your making an offer you should refer to the contract documentation for information and contractual provisions relating to net sales area. The information contained within this document does not constitute part of any offer, contract, or warranty. Whilst the plans have been prepared with all due care for the convenience of the intending purchaser, the information contained herein is a preliminary guide only.

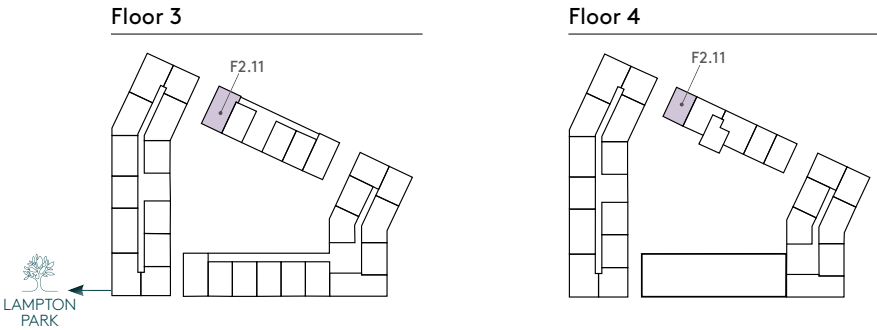
# FOREST VIEW

## DUPLEX TYPE 5



F2.11 – 2 bedroom duplex

Kitchen/Dining	5.10m x 3.85m	16'8" x 12'7"
Living Room	5.25m x 2.75m	17'2" x 9'0"
Principal Bedroom	3.20m x 3.70m	10'5" x 12'1"
Bedroom 2	3.05m x 3.95m	10'0" x 12'11"
Terrace	5.25m x 1.95m	17'2" x 6'4"

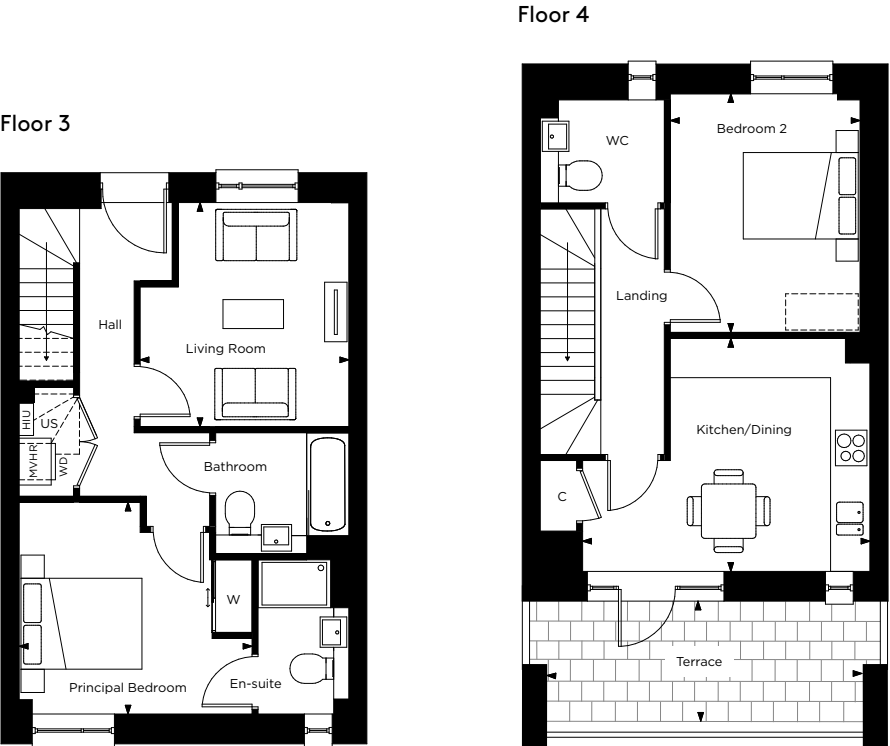


C = Cupboard W = Wardrobe US = Utility Store WD = Washer/Dryer MVHR = MVHR HIU = Heat Interface Unit [ ] = Indicative Wardrobe Position

All floorplans are not to scale. Layouts provide approximate measurements only and are subject to planning. Dimensions, which are taken from the indicated points of measurement, are for guidance only and are not intended to be used for window treatments or items of furniture. Bathroom and kitchen layouts are indicative only and are subject to change. Wardrobe size and position may vary. The total square footage given is an estimate only. In the event of your making an offer you should refer to the contract documentation for information and contractual provisions relating to net sales area. The information contained within this document does not constitute part of any offer, contract, or warranty. Whilst the plans have been prepared with all due care for the convenience of the intending purchaser, the information contained herein is a preliminary guide only.

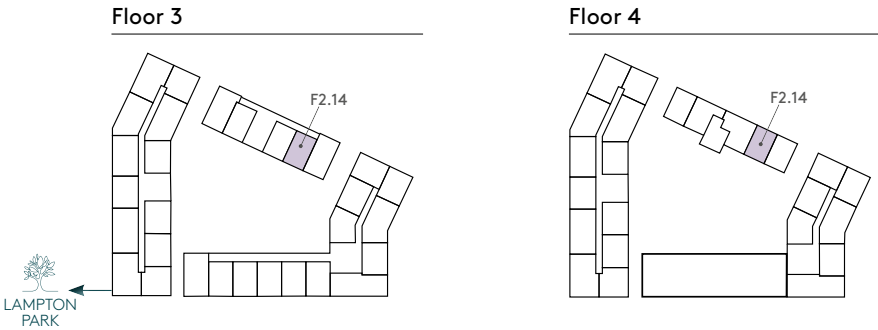
# FOREST VIEW

## DUPLEX TYPE 6



F2.14 – 2 bedroom duplex

Kitchen/Dining	4.75m x 3.85m	15'7" x 12'7"
Living Room	3.45m x 3.70m	11'3" x 12'1"
Principal Bedroom	3.85m x 3.50m	12'7" x 11'5"
Bedroom 2	3.10m x 3.90m	10'2" x 12'5"
Terrace	5.65m x 1.95m	18'6" x 6'4"



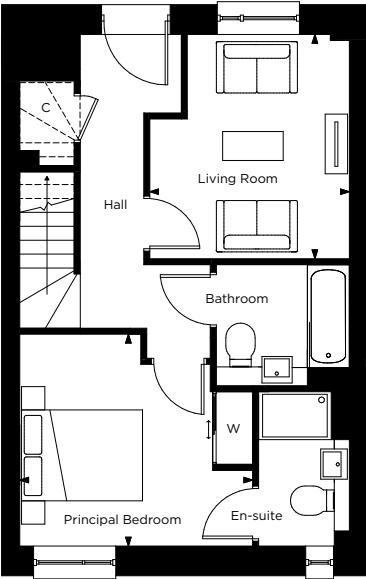
C = Cupboard W = Wardrobe US = Utility Store WD = Washer/Dryer MVHR = MVHR HIU = Heat Interface Unit [ ] = Indicative Wardrobe Position

All floorplans are not to scale. Layouts provide approximate measurements only and are subject to planning. Dimensions, which are taken from the indicated points of measurement, are for guidance only and are not intended to be used for window treatments or items of furniture. Bathroom and kitchen layouts are indicative only and are subject to change. Wardrobe size and position may vary. The total square footage given is an estimate only. In the event of your making an offer you should refer to the contract documentation for information and contractual provisions relating to net sales area. The information contained within this document does not constitute part of any offer, contract, or warranty. Whilst the plans have been prepared with all due care for the convenience of the intending purchaser, the information contained herein is a preliminary guide only.

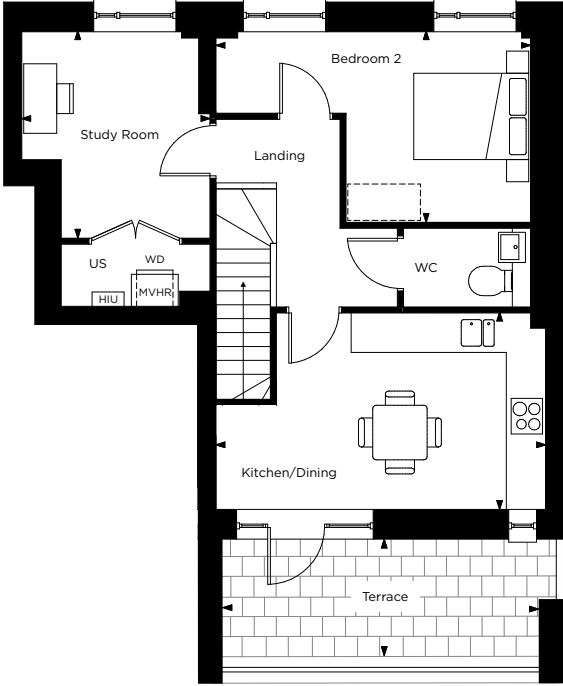
# FOREST VIEW

## DUPLEX TYPE 7

Floor 3



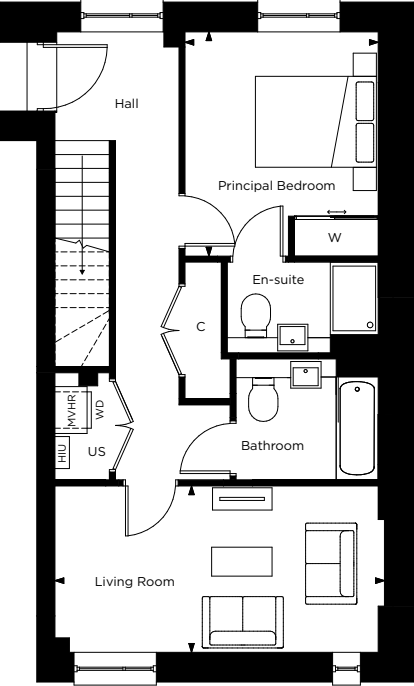
Floor 4



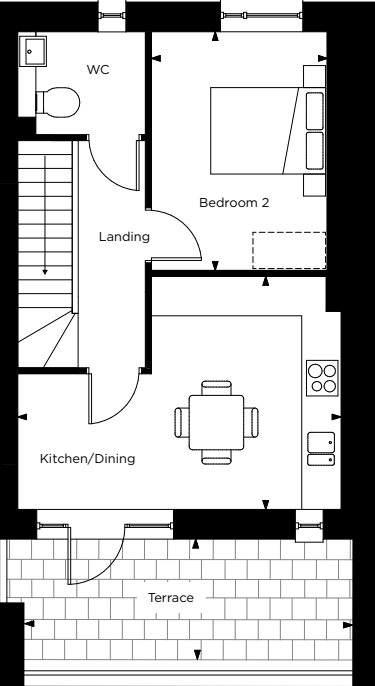
# FOREST VIEW

## DUPLEX TYPE 8

Floor 3



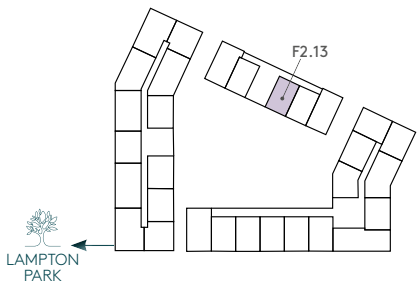
Floor 4



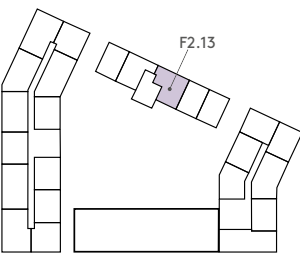
F2.13 – 2 bedroom duplex

Kitchen/Dining	5.45m x 3.25m	17'10" x 10'7"
Living Room	3.30m x 3.70m	10'9" x 12'1"
Principal Bedroom	3.85m x 3.50m	12'7" x 11'5"
Bedroom 2	5.20m x 3.15m	17'0" x 10'4"
Study Room	3.10m x 3.40m	10'2" x 11'1"
Terrace	5.80m x 1.95m	19'0" x 6'4"

Floor 3



Floor 4



C = Cupboard W = Wardrobe US = Utility Store WD = Washer/Dryer MVHR = MVHR HIU = Heat Interface Unit [ ] = Indicative Wardrobe Position

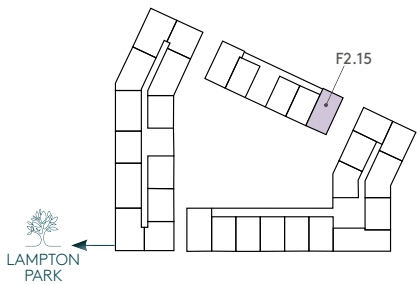


All floorplans are not to scale. Layouts provide approximate measurements only and are subject to planning. Dimensions, which are taken from the indicated points of measurement, are for guidance only and are not intended to be used for window treatments or items of furniture. Bathroom and kitchen layouts are indicative only and are subject to change. Wardrobe size and position may vary. The total square footage given is an estimate only. In the event of your making an offer you should refer to the contract documentation for information and contractual provisions relating to net sales area. The information contained within this document does not constitute part of any offer, contract, or warranty. Whilst the plans have been prepared with all due care for the convenience of the intending purchaser, the information contained herein is a preliminary guide only.

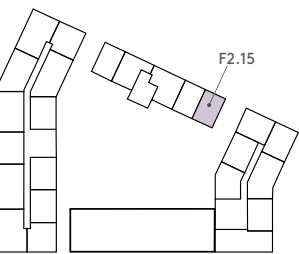
F2.15 – 2 bedroom duplex

Kitchen/Dining	5.30m x 3.85m	17'4" x 12'7"
Living Room	5.45m x 2.75m	17'10" x 9'0"
Principal Bedroom	3.15m x 3.70m	10'4" x 12'1"
Bedroom 2	2.90m x 3.95m	9'6" x 12'11"
Terrace	5.25m x 1.95m	17'2" x 6'4"

Floor 3



Floor 4



C = Cupboard W = Wardrobe US = Utility Store WD = Washer/Dryer MVHR = MVHR HIU = Heat Interface Unit [ ] = Indicative Wardrobe Position



All floorplans are not to scale. Layouts provide approximate measurements only and are subject to planning. Dimensions, which are taken from the indicated points of measurement, are for guidance only and are not intended to be used for window treatments or items of furniture. Bathroom and kitchen layouts are indicative only and are subject to change. Wardrobe size and position may vary. The total square footage given is an estimate only. In the event of your making an offer you should refer to the contract documentation for information and contractual provisions relating to net sales area. The information contained within this document does not constitute part of any offer, contract, or warranty. Whilst the plans have been prepared with all due care for the convenience of the intending purchaser, the information contained herein is a preliminary guide only.



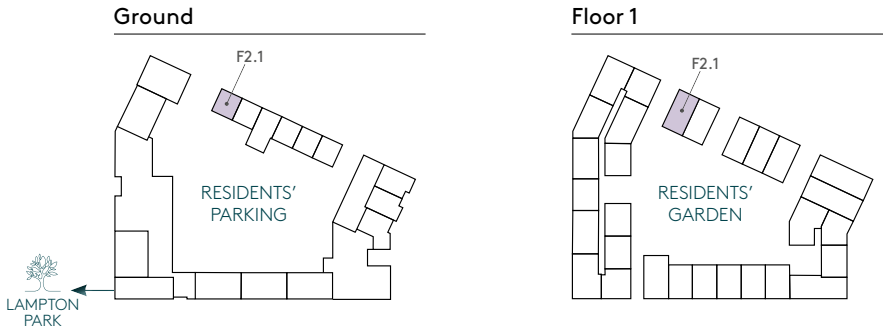
# FOREST VIEW

## DUPLEX TYPE 9



### F2.1 – 2 bedroom duplex

Kitchen/Dining/Living	2.80m x 5.65m	9'2" x 18'6"
Family Room	2.55m x 3.60m	8'4" x 11'9"
Principal Bedroom	2.60m x 4.75m	8'6" x 15'7"
Bedroom 2	2.95m x 3.80m	9'8" x 12'5"
Terrace	6.00m x 2.45m	19'8" x 8'0"

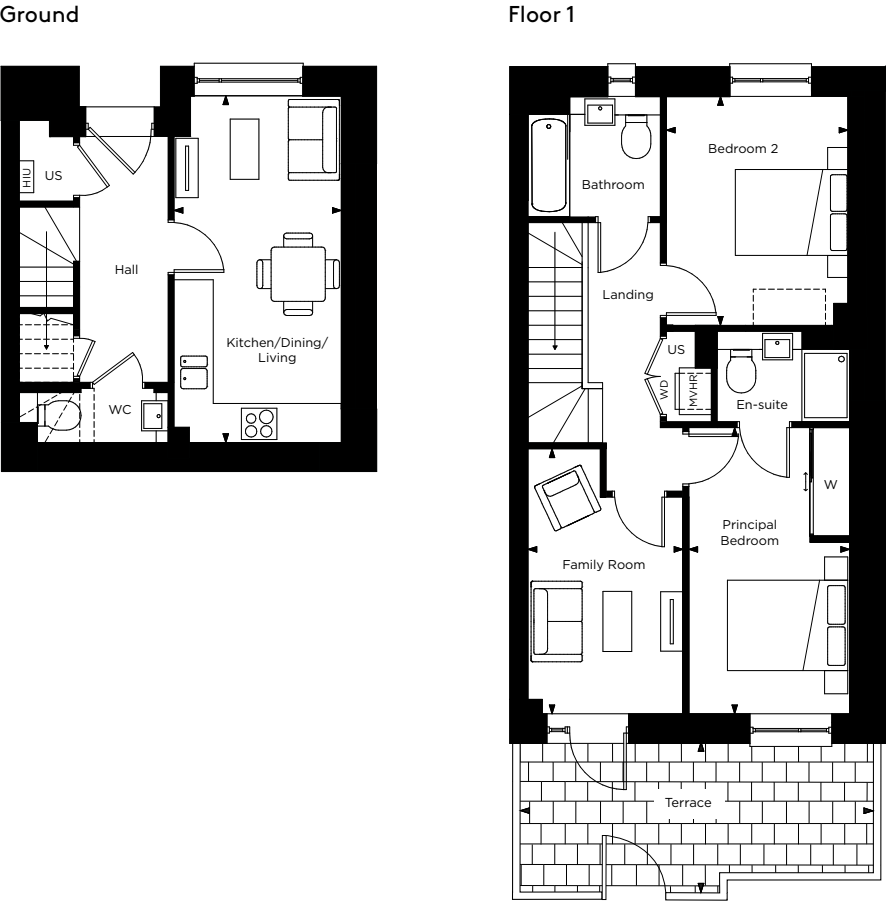


C = Cupboard W = Wardrobe US = Utility Store WD = Washer/Dryer MVHR = MVHR HIU = Heat Interface Unit [ ] = Indicative Wardrobe Position

All floorplans are not to scale. Layouts provide approximate measurements only and are subject to planning. Dimensions, which are taken from the indicated points of measurement, are for guidance only and are not intended to be used for window treatments or items of furniture. Bathroom and kitchen layouts are indicative only and are subject to change. Wardrobe size and position may vary. The total square footage given is an estimate only. In the event of your making an offer you should refer to the contract documentation for information and contractual provisions relating to net sales area. The information contained within this document does not constitute part of any offer, contract, or warranty. Whilst the plans have been prepared with all due care for the convenience of the intending purchaser, the information contained herein is a preliminary guide only.

# FOREST VIEW

## DUPLEX TYPE 10



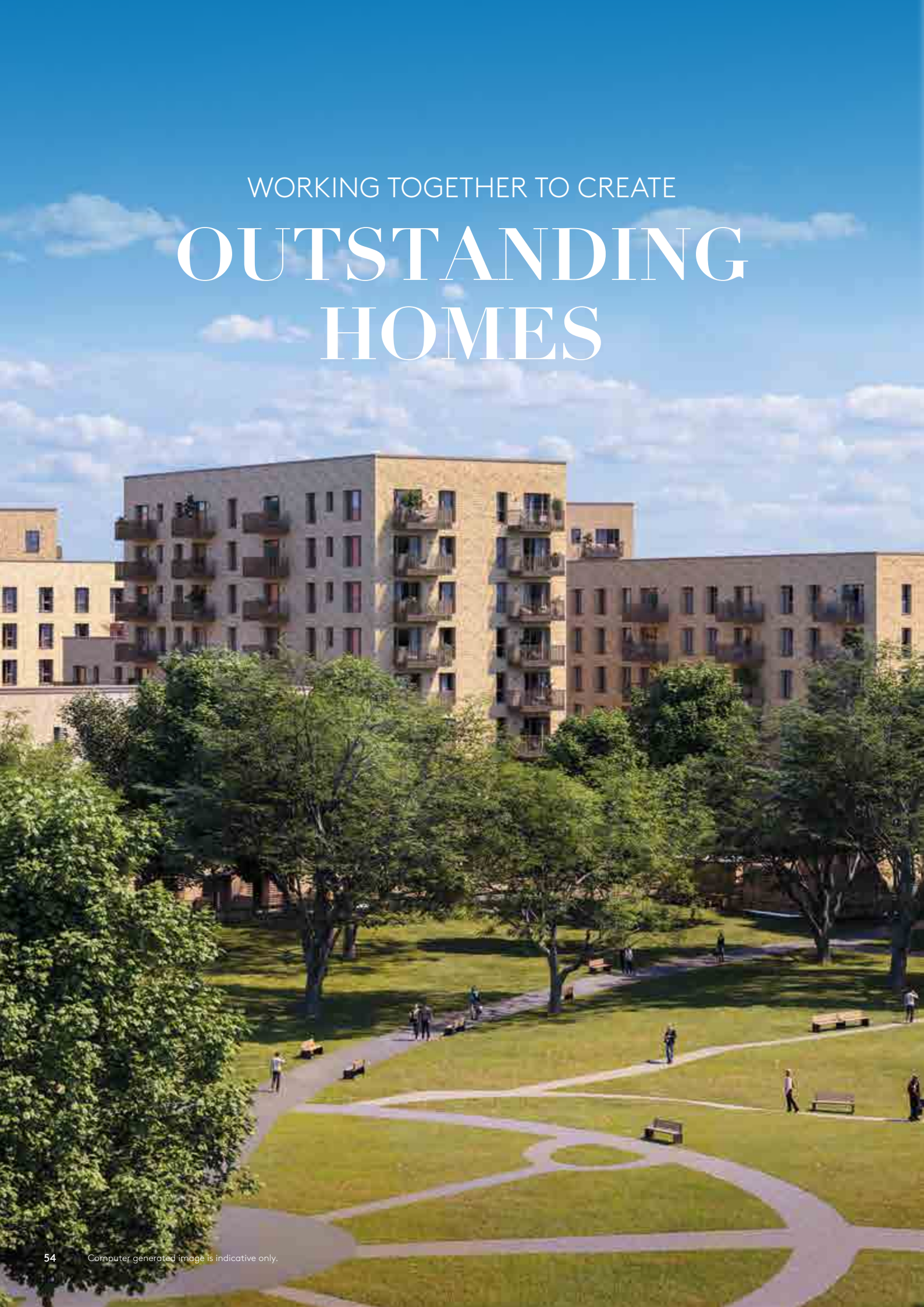
### F2.5 – 2 bedroom duplex

Kitchen/Dining/Living	2.75m x 5.75m	9'0" x 18'10"
Family Room	2.55m x 4.40m	8'4" x 14'5"
Principal Bedroom	2.65m x 4.75m	8'8" x 15'7"
Bedroom 2	3.00m x 3.80m	9'10" x 12'5"
Terrace	5.95m x 2.45m	19'6" x 8'0"



C = Cupboard W = Wardrobe US = Utility Store WD = Washer/Dryer MVHR = MVHR HIU = Heat Interface Unit [ ] = Indicative Wardrobe Position

All floorplans are not to scale. Layouts provide approximate measurements only and are subject to planning. Dimensions, which are taken from the indicated points of measurement, are for guidance only and are not intended to be used for window treatments or items of furniture. Bathroom and kitchen layouts are indicative only and are subject to change. Wardrobe size and position may vary. The total square footage given is an estimate only. In the event of your making an offer you should refer to the contract documentation for information and contractual provisions relating to net sales area. The information contained within this document does not constitute part of any offer, contract, or warranty. Whilst the plans have been prepared with all due care for the convenience of the intending purchaser, the information contained herein is a preliminary guide only.



WORKING TOGETHER TO CREATE

# OUTSTANDING HOMES

LAMPTON PARKSIDE IS A VISIONARY COLLABORATION  
BETWEEN HILL AND NOTTING HILL GENESIS, BRINGING TOGETHER  
FIVE STAR HOUSEBUILDING WITH A COMMITMENT TO MAINTAINING  
A DIVERSE AND THRIVING COMMUNITY.



The Hill Group is a top 10 housebuilder\* and one of the leading developers in London, the home counties, and the South. The company is renowned for its partnership ethos, specialising in the building of distinctive new places and communities where people want to live, work, and socialise.

In its 25th year, this family-owned and operated company has grown to establish itself as the UK's second-largest privately-owned housebuilder, with an impressive and diverse portfolio of projects ranging from landmark, mixed-use regenerations, and inner-city apartment developments to homes in rural communities.

Employing over 950 staff, the company operates from six strategically located regional offices including Bristol and Abingdon to help facilitate growth in the South West and the Midlands, with its head office based in Waltham Abbey, Essex.

Hill completed 2,886 homes in the last financial year and has a controlled development pipeline of over 8,800 homes. Around half of its portfolio is in joint ventures to deliver a range of mixed-tenure developments, reflecting Hill's commitment to partnerships with government, local authorities, housing associations, and private clients.

Since the company was founded in 1999, Hill has won over 500 industry awards, including the esteemed title of WhatHouse? Housebuilder of the Year in 2015, 2020 and 2023. Most recently in 2024, Millside Grange in Croxley Green also won The Standard's Homes & Property Award for Best Commuter Home.

In addition, Hill's dedication to delivering the highest quality homes and exceptional customer service has earned the housebuilder its 5-star status in the Home Builders Federation's annual Customer Satisfaction Survey for the past eight years. With a score of 4.8 out of 5, Hill is also ranked as the number one housebuilder on Trustpilot.

Hill is donating 200 fully equipped modular homes to local authorities and homeless charities as part of a £15 million pledge through its Foundation 200 programme, launched in 2019 to mark Hill's 20th anniversary.

Follow us on Instagram @CreatedbyHill

At Notting Hill Genesis, we build and maintain quality affordable homes, creating diverse and thriving communities.

Notting Hill Genesis are one of the largest housing associations in London and the south-east, owning and managing more than 66,000 homes. We provide homes across a range of tenures, are a leading provider of Shared Ownership, and are committed to realising our vision, which is to provide homes that build a better place for all.

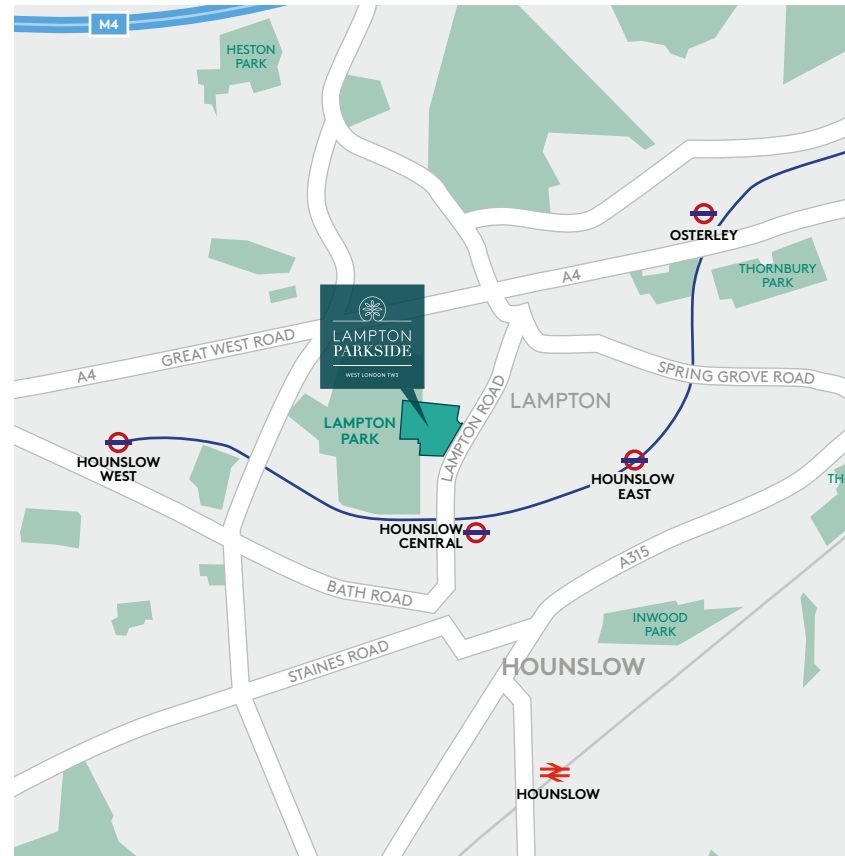
Our focus is our customers. We put their needs at the heart of our structures, processes and systems and they drive our decisions each and every day. We want them to be proud of the place they call home and from where they can begin to build lives, communities and futures.



\*The Hill Group was listed within the top 10 of the Top 150 UK Contractors and Housebuilders published by Building.co.uk in December 2024



# HOW TO FIND US



Lampton Parkside Sales Suite  
Lampton Road  
TW3 4FD

020 3959 0900  
[lamptonparkside.co.uk](http://lamptonparkside.co.uk)

This brochure, and the description and measurements herein, do not form any part of a contract. Whilst every effort has been made to ensure accuracy, this cannot always be guaranteed. Site layouts, and specifications are taken from drawings which were correct at the time of print. The information and imagery contained in this brochure is for guidance purposes only and does not constitute a contract, part of contract or warranty. Images of the Lampton Parkside properties are computer generated and the landscaping may have been enhanced. Details correct at time of going to print.



[lamptonparkside.co.uk](http://lamptonparkside.co.uk)

A UNIQUE COLLABORATION BETWEEN

---

